

Achievement Gap Advisory Panel

Presentation

G. Glass

March 10, 2014



Achievement



MPS Enrollment Data 2013-2014

WHITE	BLACK	HISPANIC	AMER. Ind.	ASIAN P/I
51%	32%	10%	0%	7%

Special Education

**17% of Total
Population**

Standardized Test Data

- NJASK , HSPA and Average SAT Scores
- Benchmark Data for Literacy & Math for K-5
- Reading levels for Kindergartners & GR3
- AP Scores
- College Board Report on SAT Readiness/College & Career Readiness Benchmarks/Pathway Benchmarks for College & Career Readiness

Opportunity to Learn Data

- Special Education referral rates
- AP Course Enrollment
- In-school & Out-of-School Suspension Rates
- Enrollment & pass rates across all levels of Algebra
- Number of 8th graders taking & passing Algebra

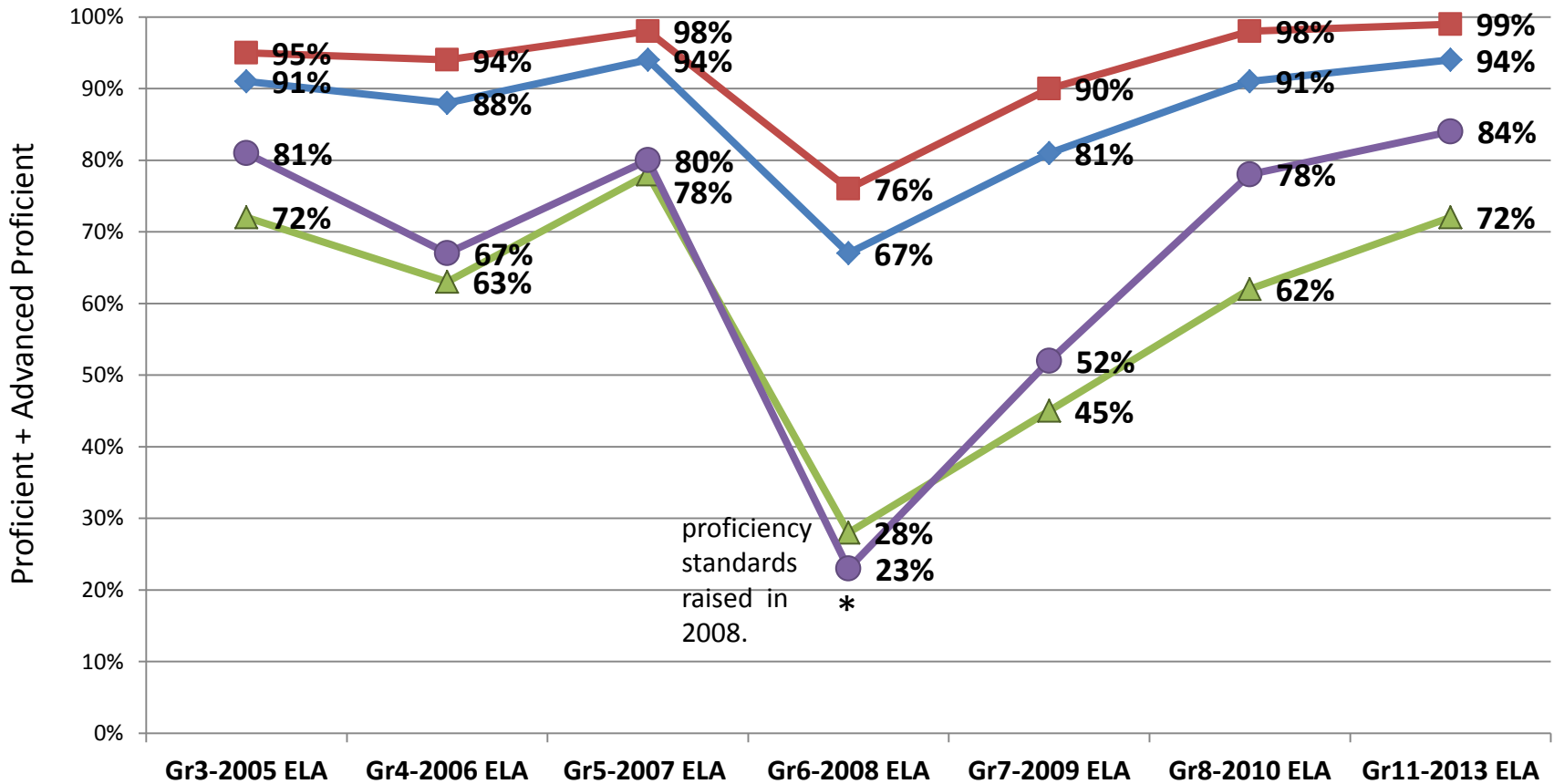
MPS Academic Levels/Magnets/SLC Data

- Enrollment & pass rates across Magnets & MHS Small Learning Communities
- Enrollment & pass rates across leveled classes

Special Thanks to Kaili Baucum

Class of 2014 – ELA Groups

Current Seniors



Number of
Valid Scores:

◆ Total (548,530,531,516,526,522,501)

▲ Sp Ed (83, 93, 104, 91, 94, 91, 87)

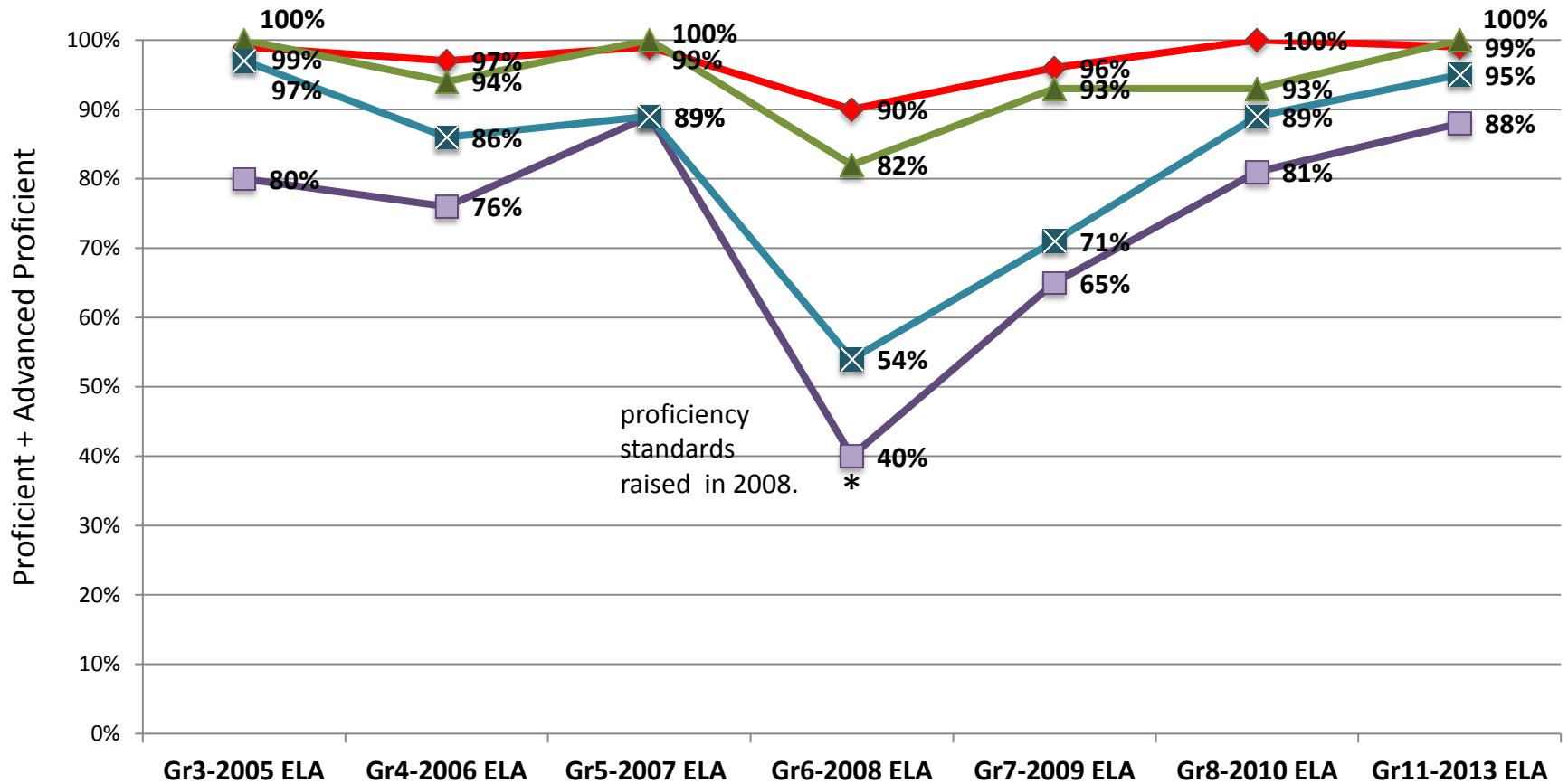
■ Gen Ed (464,435,424,421,430,428,414)

● Low SES (73, 79, 95, 86, 79, 96, 96)

* NJASK prof. standards raised for grades 5,6,7

Class of 2014 – ELA Eth/Race

Current Seniors

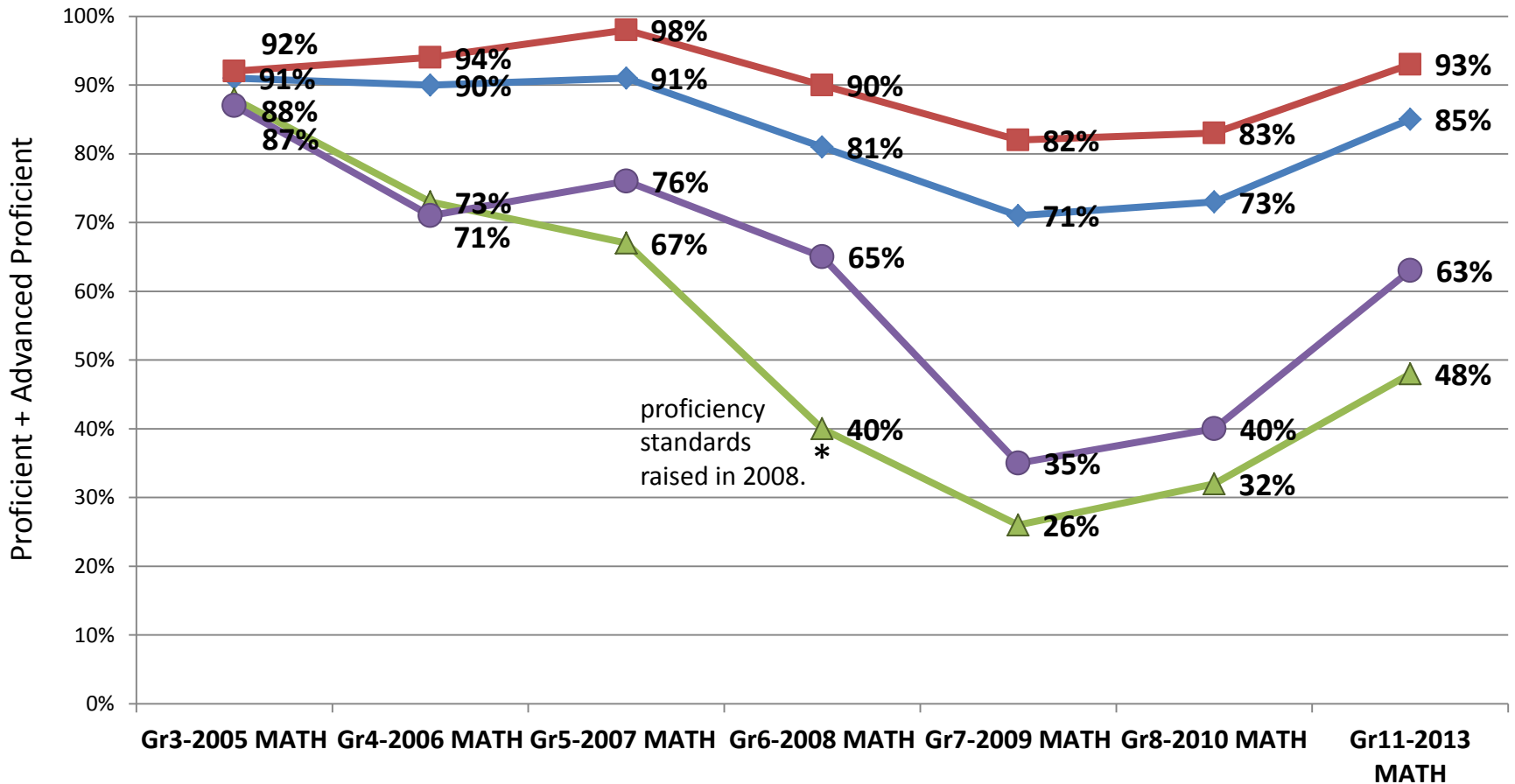


Number of Valid Scores:
 White (268,264,263,246,244,245,237)
 Asian (30, 32, 28, 28, 28, 30, 28)
 Afr Am (211,202,203,202,213,209,197)
 Hisp (36, 36, 38, 39, 41, 38, 39)

* NJASK prof. standards raised for grades 5,6,7

Class of 2014 – MATH Groups

Current Seniors



Number of
Valid Scores:

◆ Total (552,536,535,517,529,523,498)

▲ Sp Ed (84, 96, 105, 92, 94, 91, 86)

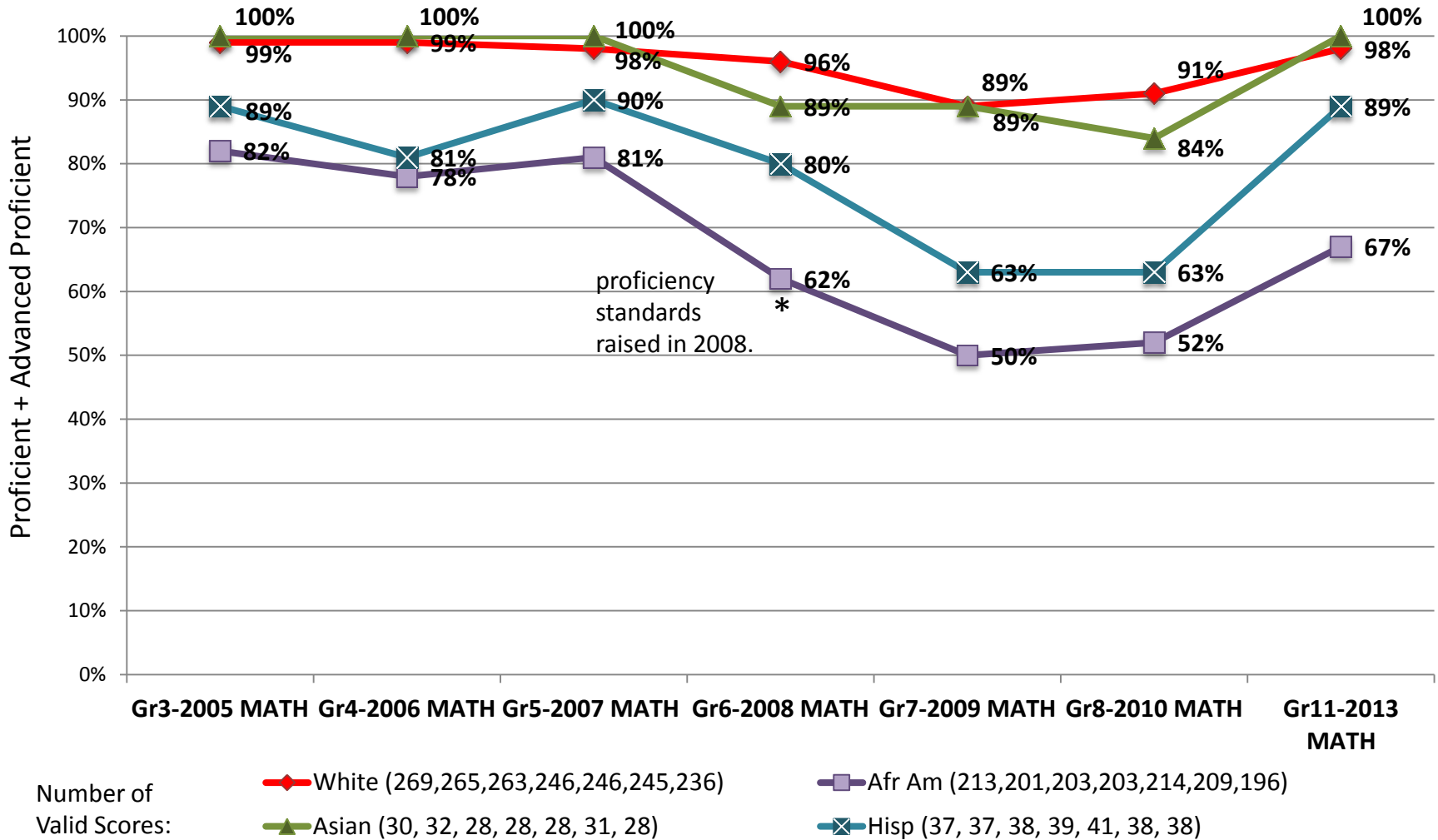
■ Gen Ed (465,436,424,421,430,428,412)

● Low SES (74, 83, 96, 86, 80, 96, 94)

* NJASK prof. standards raised for grades 5,6,7

Class of 2014 – MATH Eth/Race

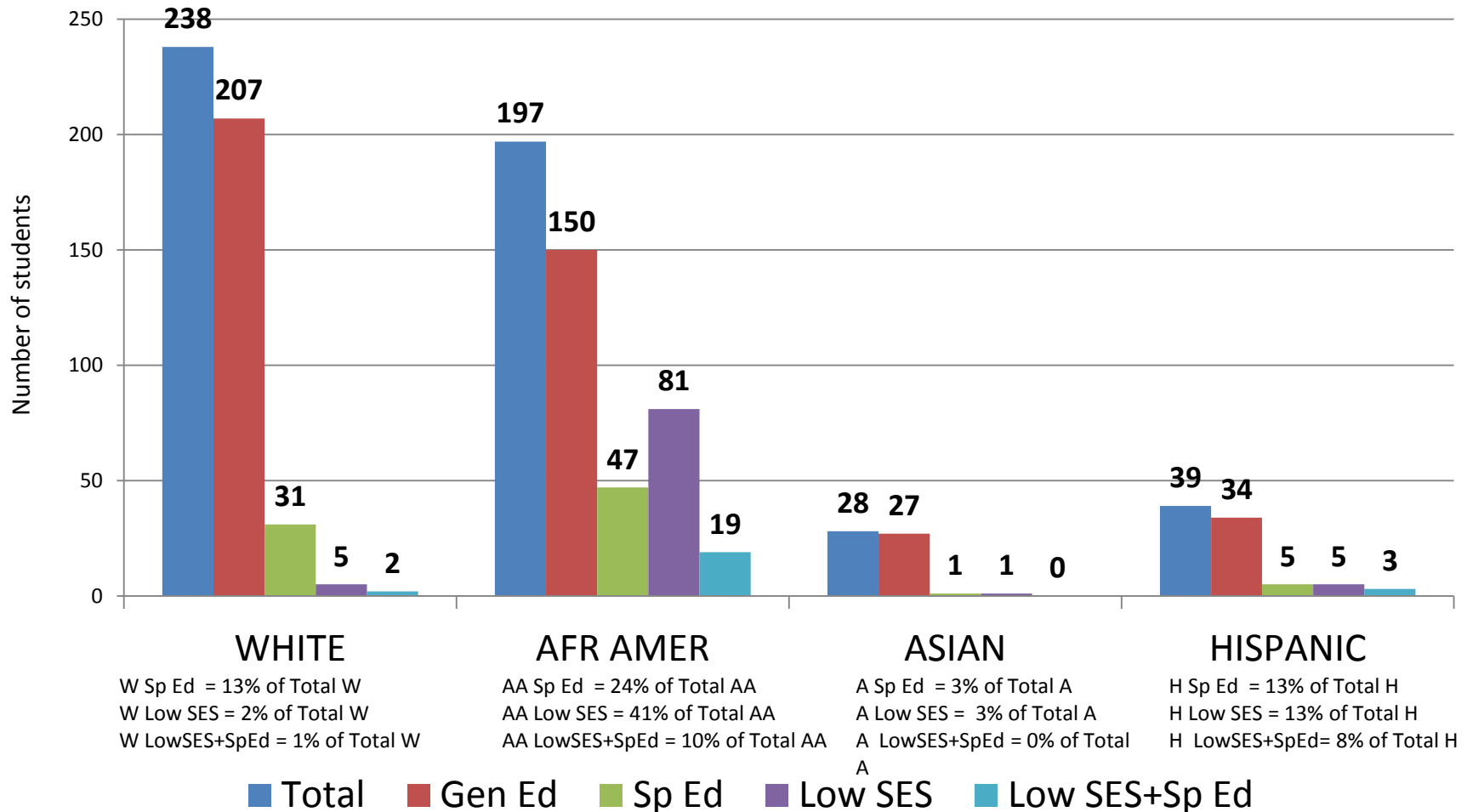
Current Seniors



* NJASK prof. standards raised for grades 5,6,7

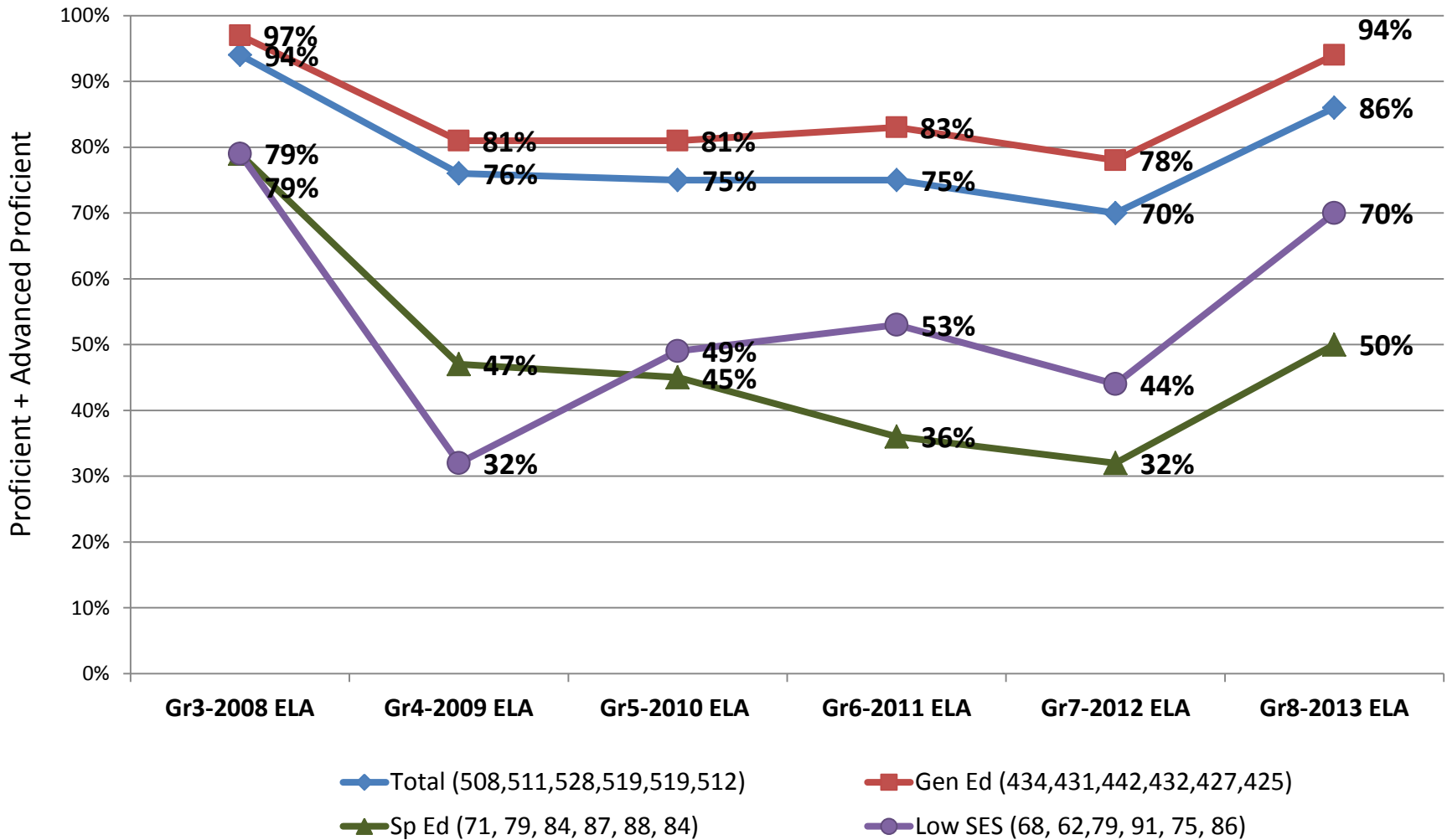
Class of 2014 By Race/Group

Current Seniors



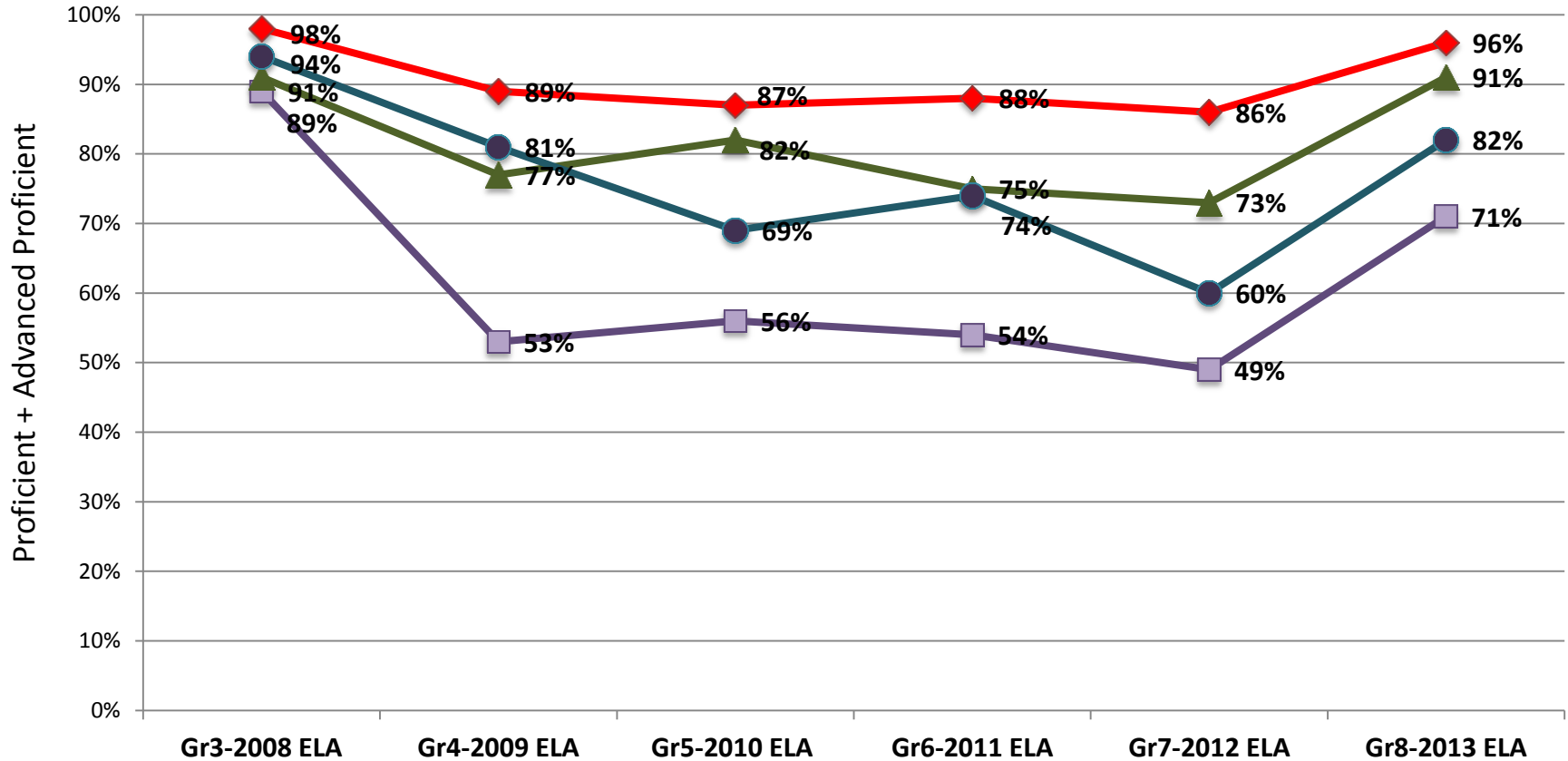
Class of 2017 – ELA Groups

Current 9th Graders



Class of 2017 – ELA Eth/Race

Current 9th Graders



Number of
Valid Scores:

White (279,275,278,273,262,258)

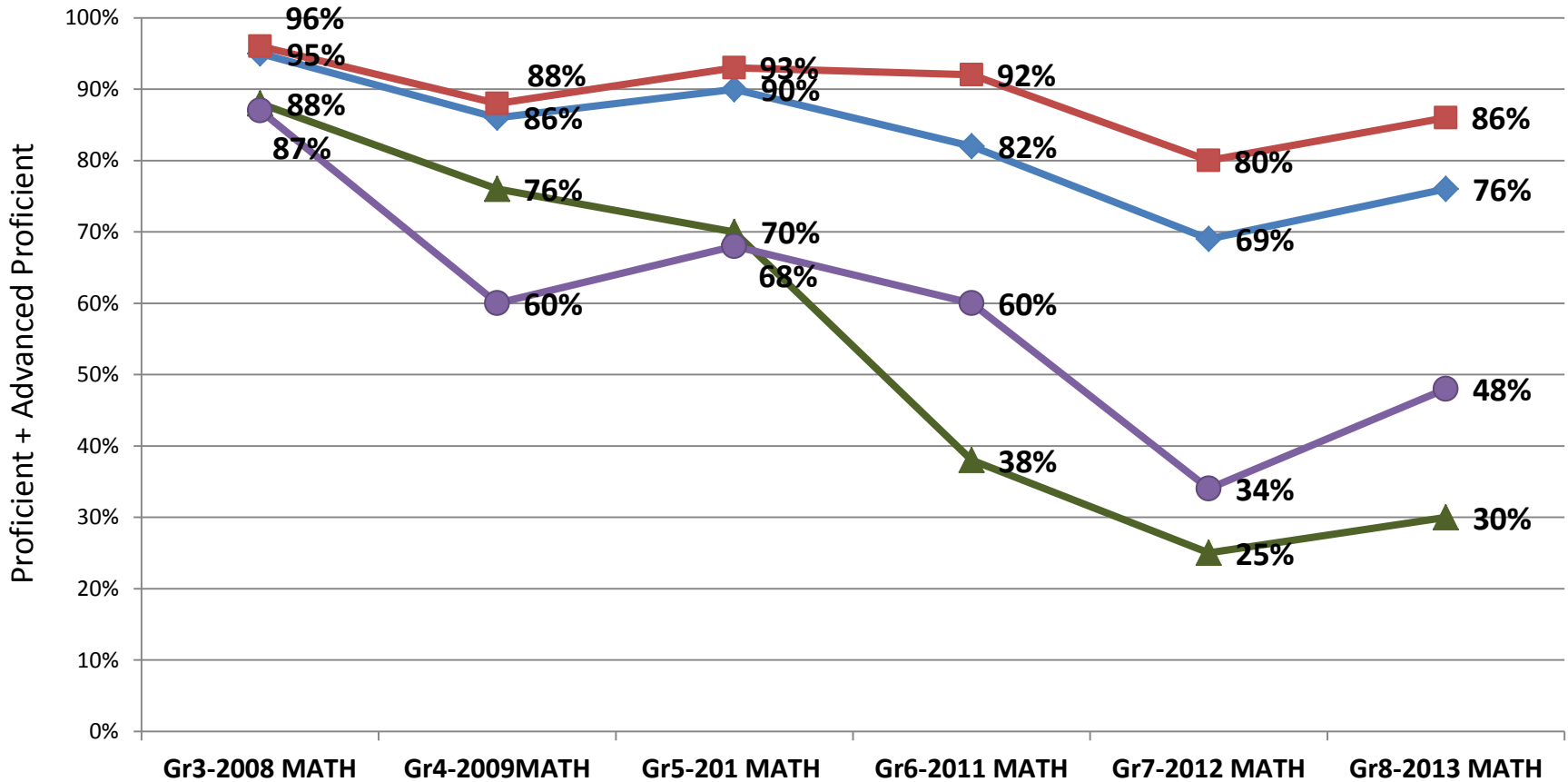
Asian (34, 31, 34, 35, 33, 11)

Afr Am (158,167,170,169,179,169)

Hisp (35, 36, 42, 39, 42, 44)

Class of 2017 – MATH Groups

Current 9th Graders



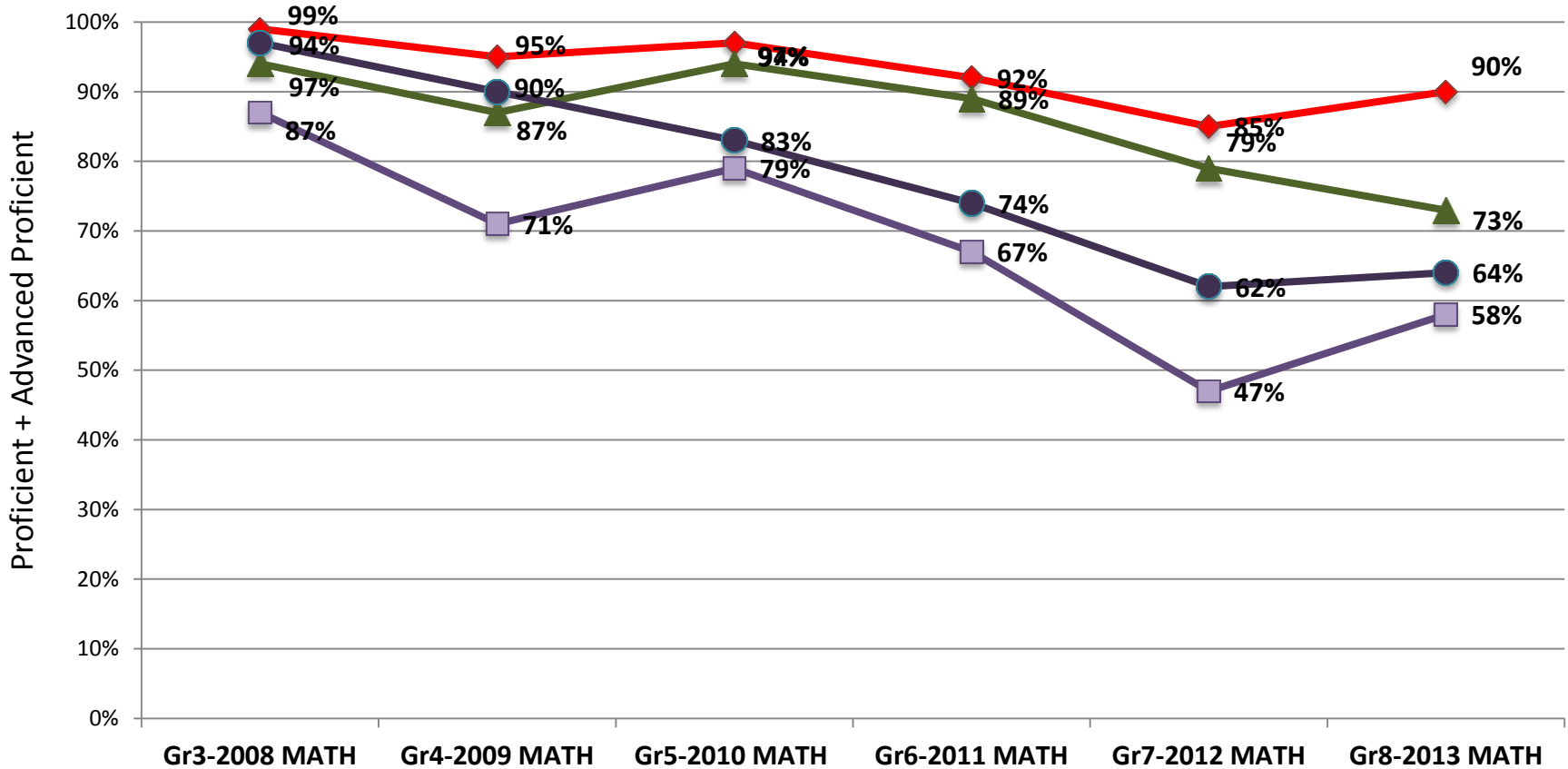
Number of
Valid Scores:

◆ Total (511,513,527,522,522,512)
▲ Sp Ed (73, 79, 83, 87, 88, 84)

■ Gen Ed (435,431,442,432,427,425)
● Low SES (68, 62, 79, 92, 76, 86)

Class of 2017 – MATH Eth/Race

Current 9th Graders



Number of
Valid Scores:

◆ White (280,277,278,273,264,258)

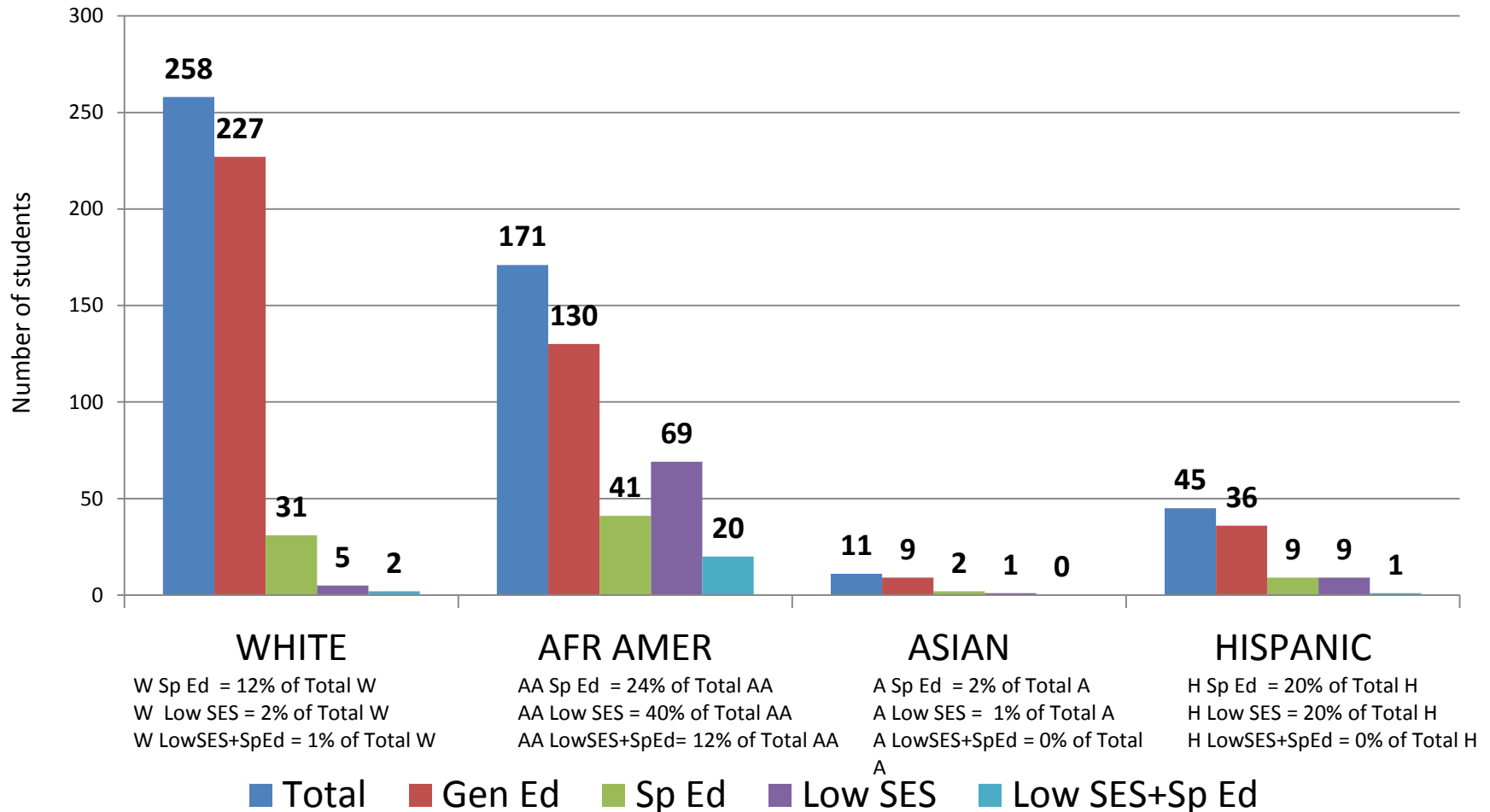
▲ Asian (34, 31, 34, 36, 33, 11)

■ Afr Am (159,167,170,171,180,169)

● Hisp (35, 36, 41, 39, 42, 44)

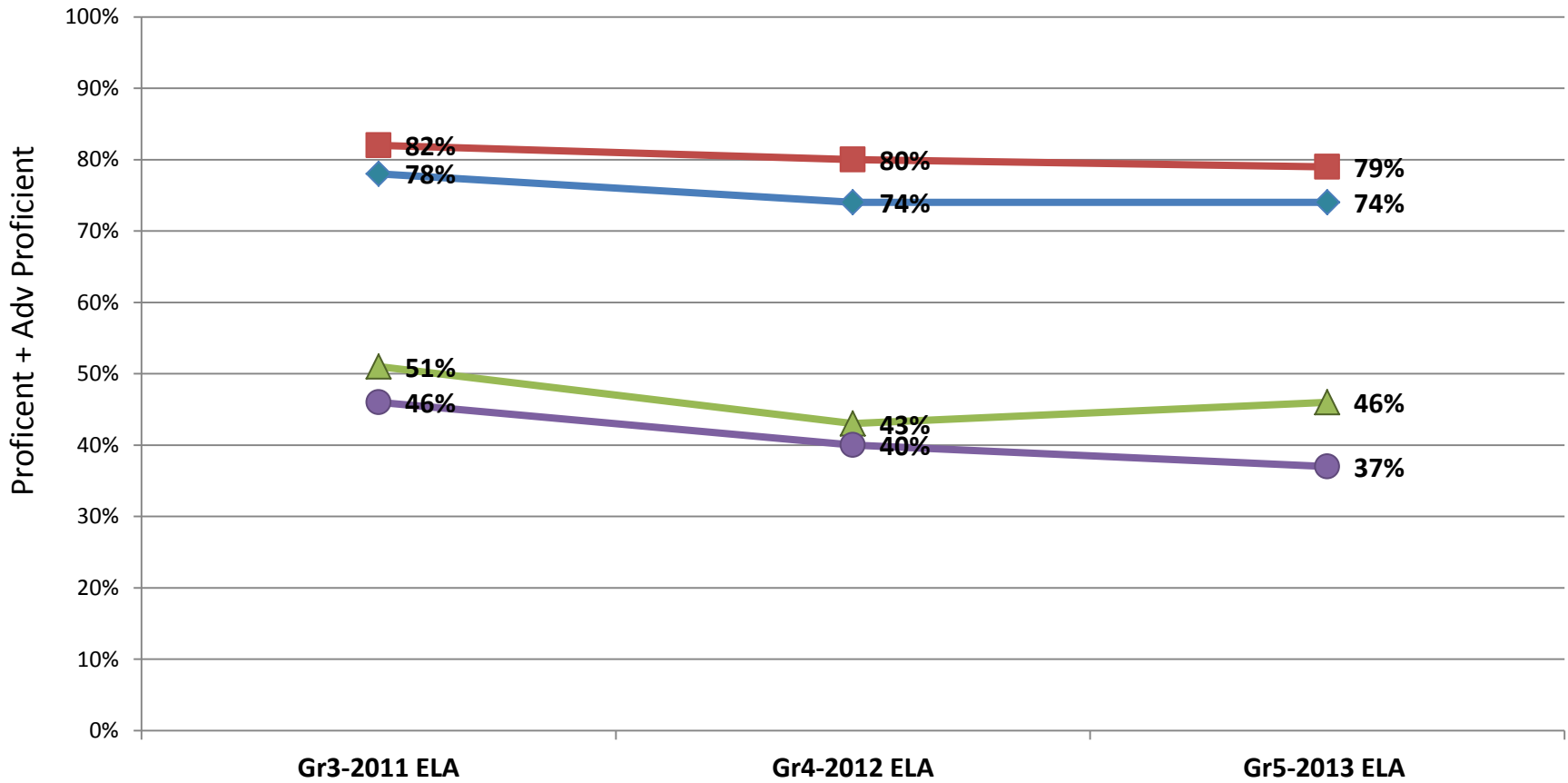
Class of 2017 By Race/Group

Current 9th Graders



Class of 2020 – ELA Groups

Current 6th Graders

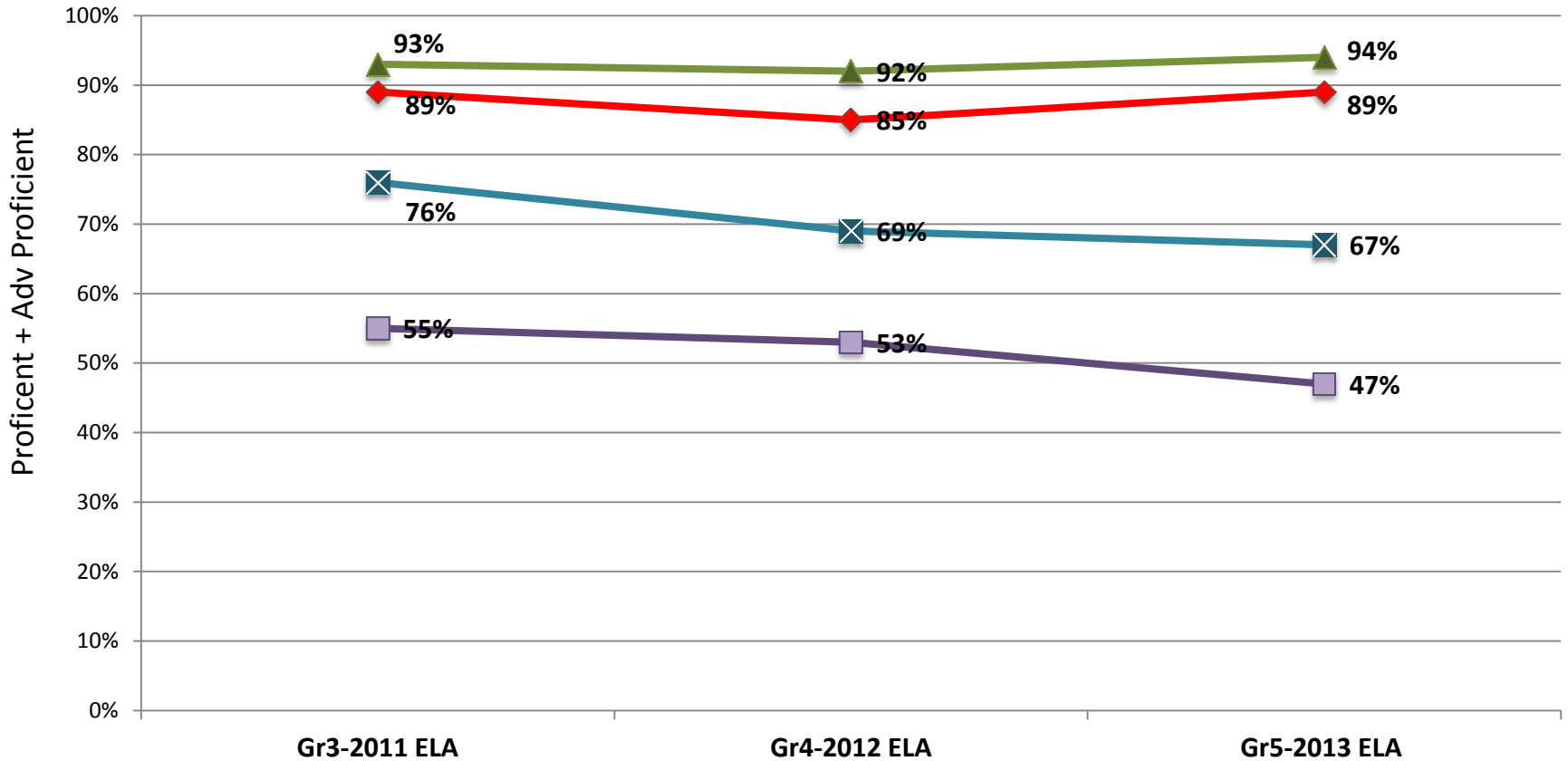


Number of Valid Scores:

◆ Total (516,526,528)
 ■ Gen Ed (443,442,440)
 ▲ Sp Ed (70, 82, 87)
 ● Low SES (82, 58, 91)

Class of 2020 – ELA Eth/Race

Current 6th Graders

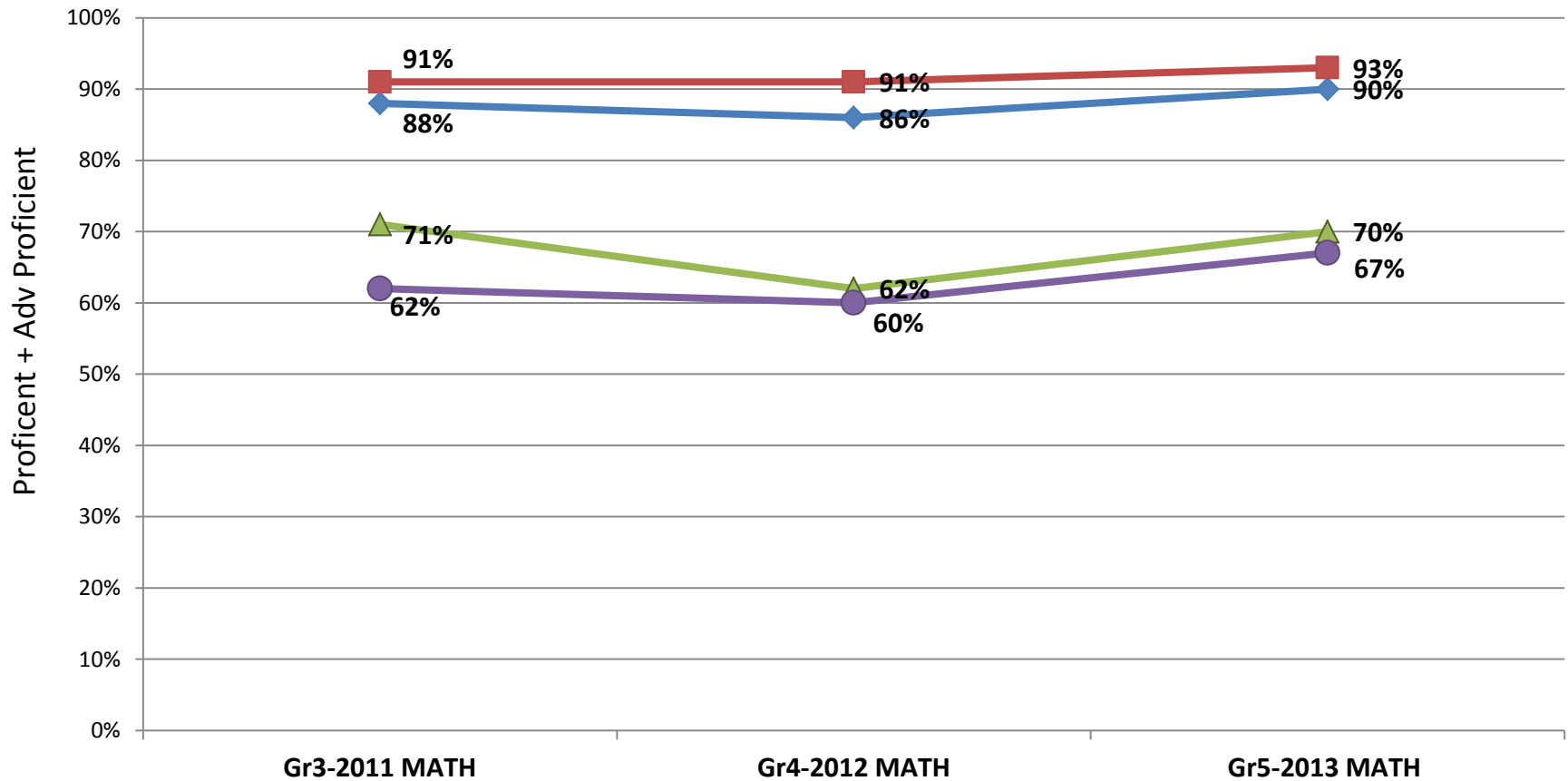


Number of
Valid Scores:

◆ White (253,255,251)
 ■ Afr Am (152,150,159)
 ▲ Asian (47, 52, 47)
 ⊠ Hisp (60, 66, 64)

Class of 2020 – MATH Groups

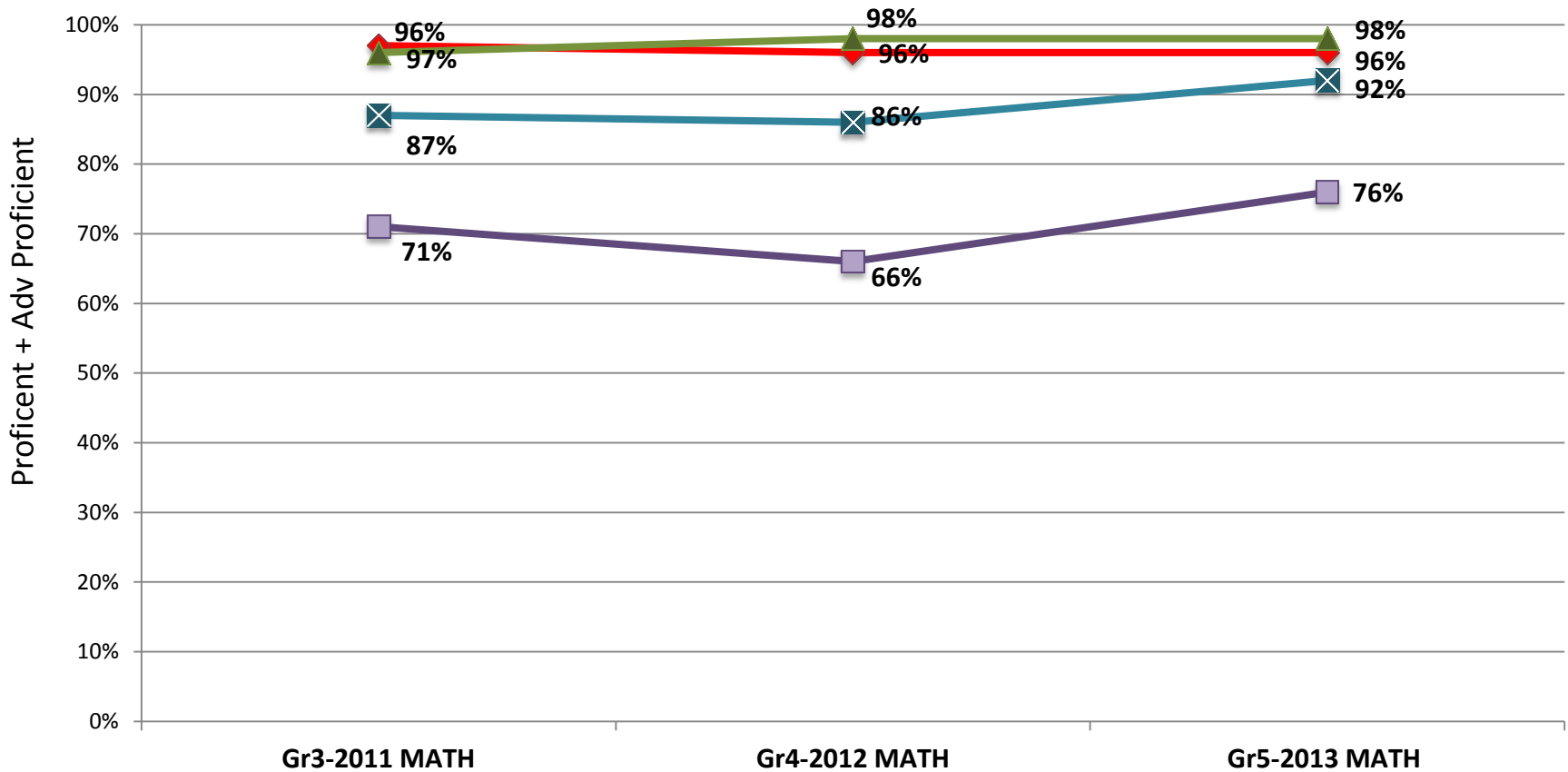
Current 6th Graders



Number of Valid Scores:
◆ Total (516,530,527)
■ Gen Ed (443,444,440)
▲ Sp Ed (70, 82, 86)
● Low SES (82, 58, 91)

Class of 2020 – MATH Eth/Race

Current 6th Graders

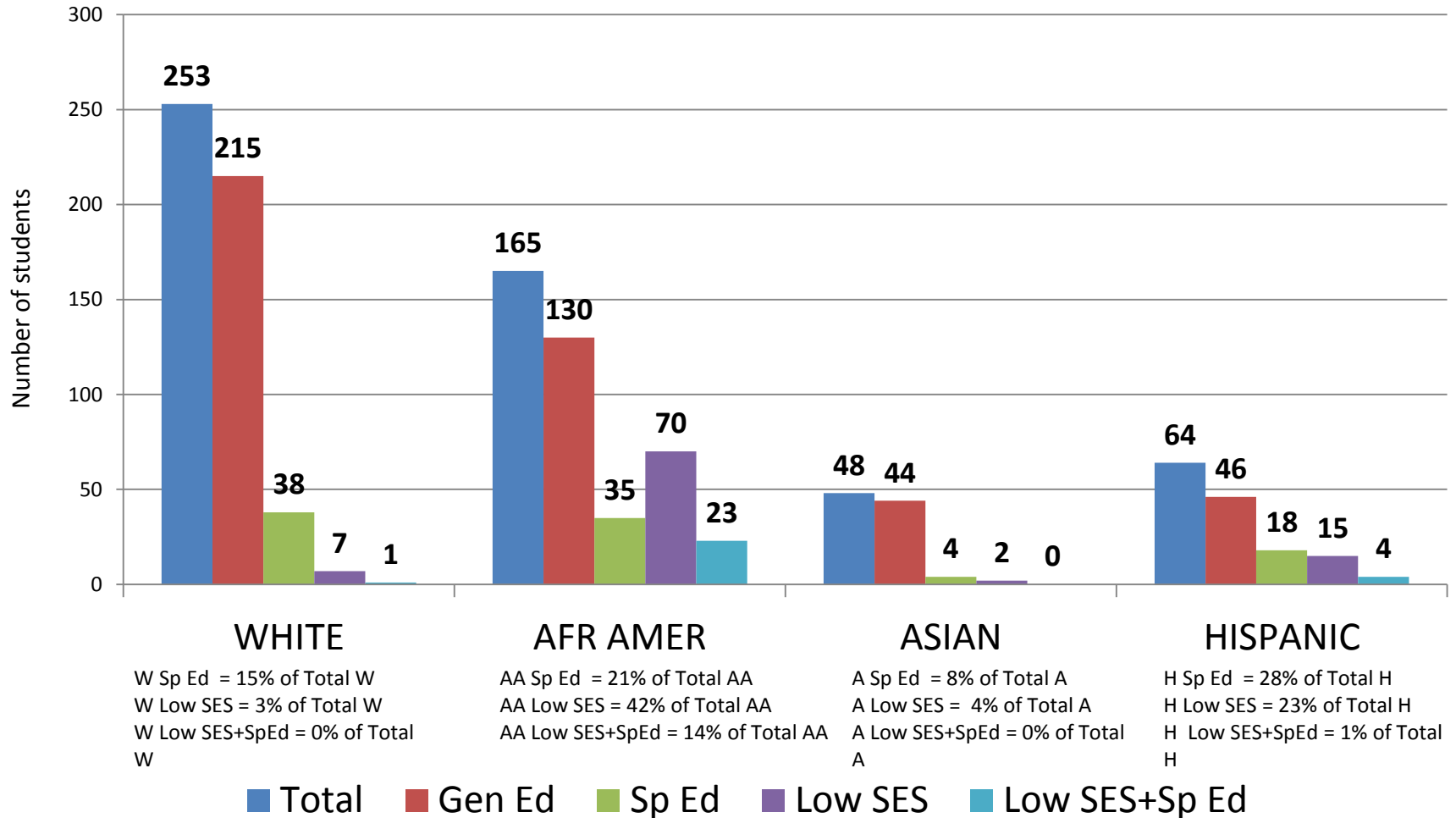


Number of
Valid Scores:

◆ White (253,255,251)
 ■ Afr Am (152,153,158)
 ▲ Asian (47, 52, 47)
 ⊠ Hisp (60, 66, 64)

Class of 2020 By Race/Group

Current 6th Graders



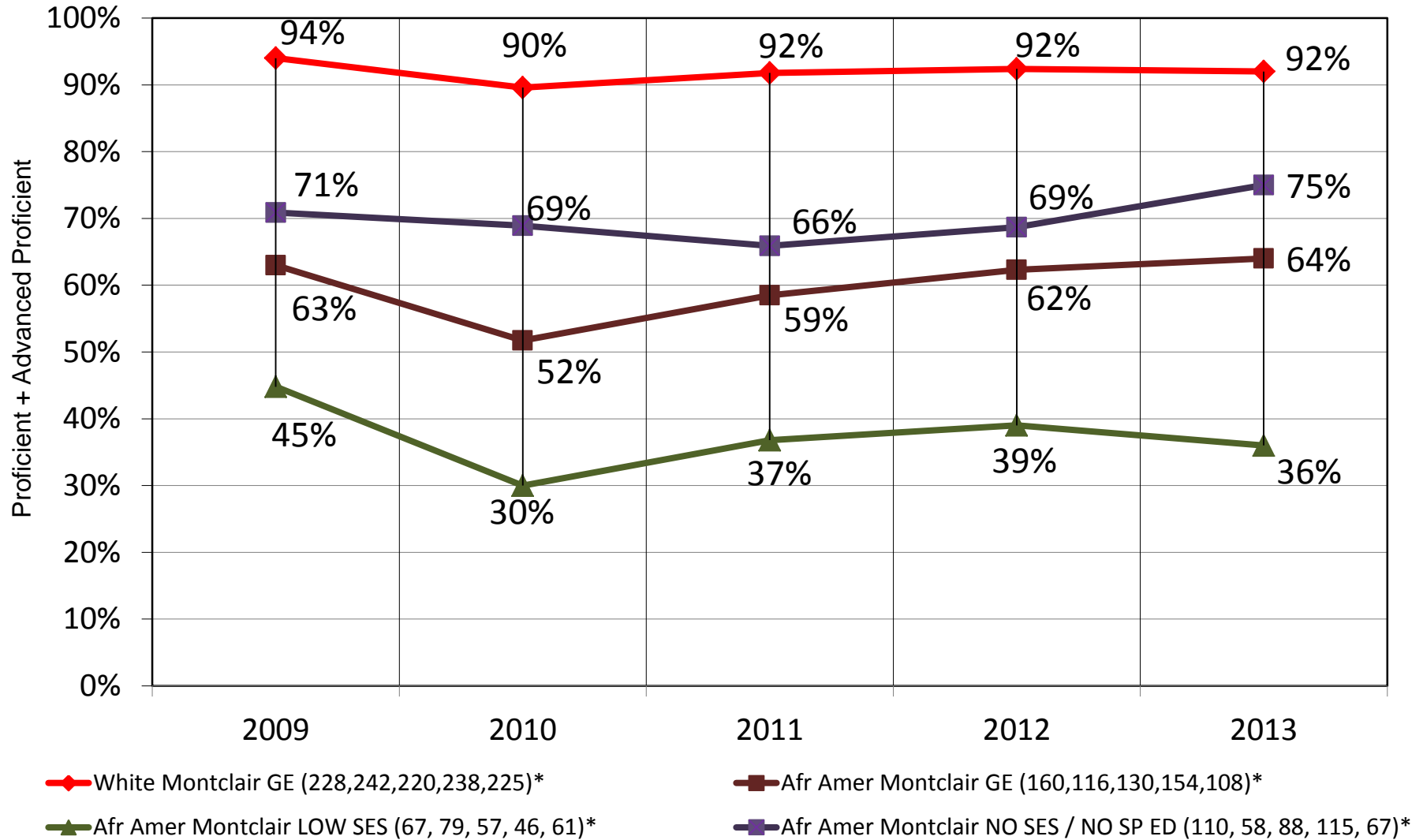
African American Subgroups

The next 8 slides present data regarding students identified as:

- GEN ED (all students other than classified students)
- LOW SES (students qualifying for free or reduced lunch)
- NO SES / NO SP ED (all students other than classified students and students qualifying for free or reduced lunch)

W / AA : 2009-12

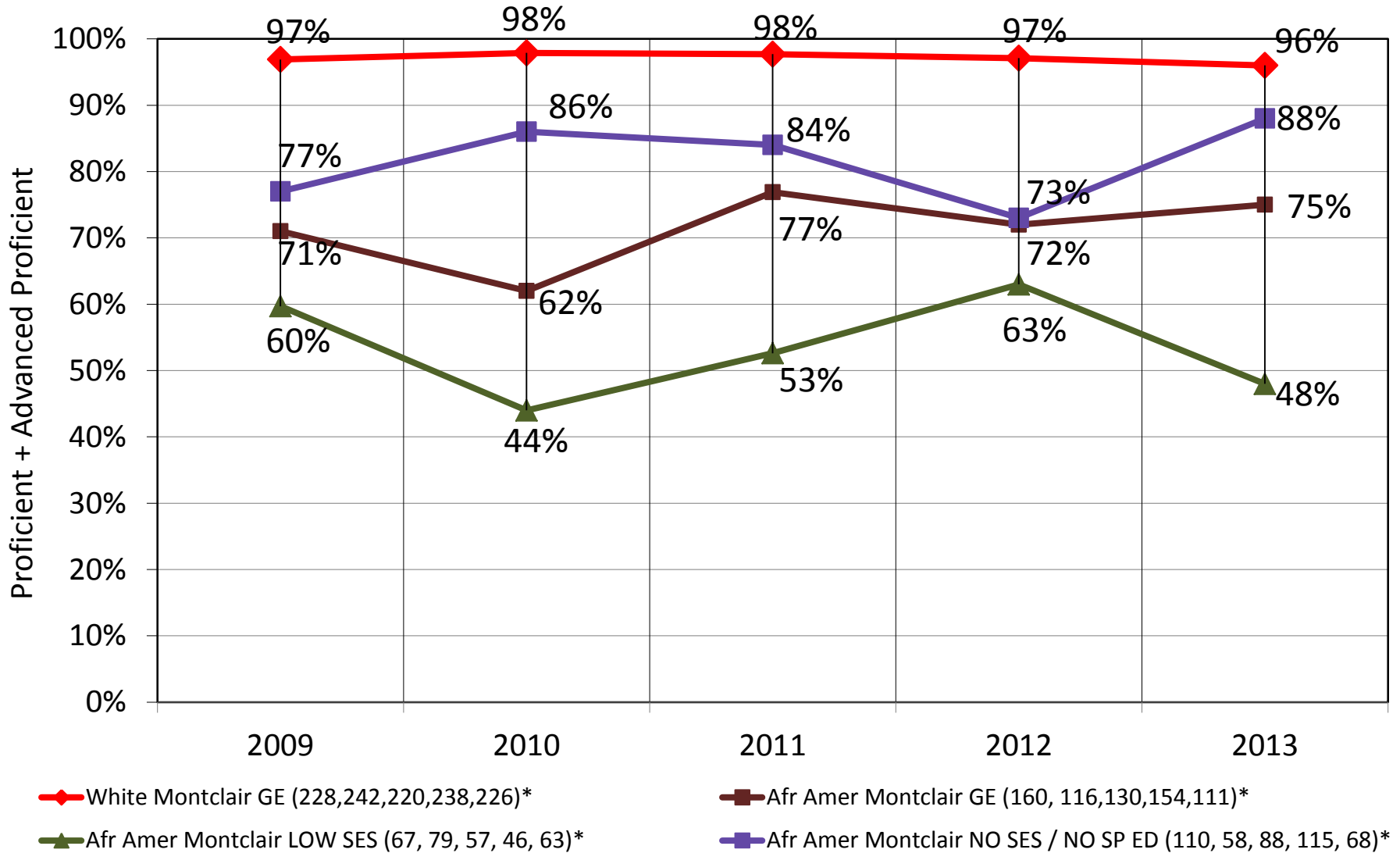
NJ ASK 3 LAL Prof/AdvProf



* No. of Valid Scores by year

W / AA: 2009-12

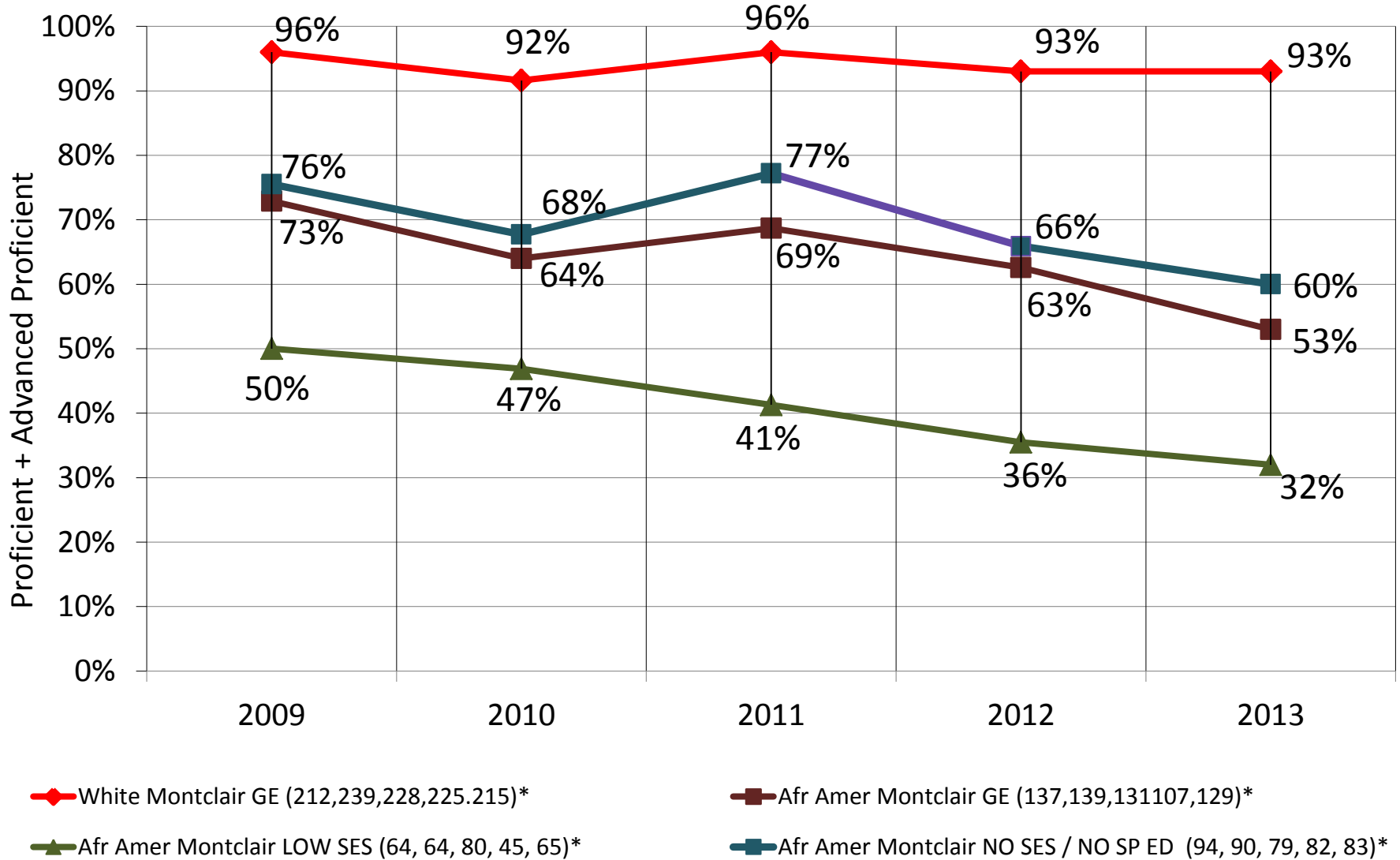
NJ ASK 3 MATH Prof/AdvProf



* No. of Valid Scores by year

W / AA: 2009-12

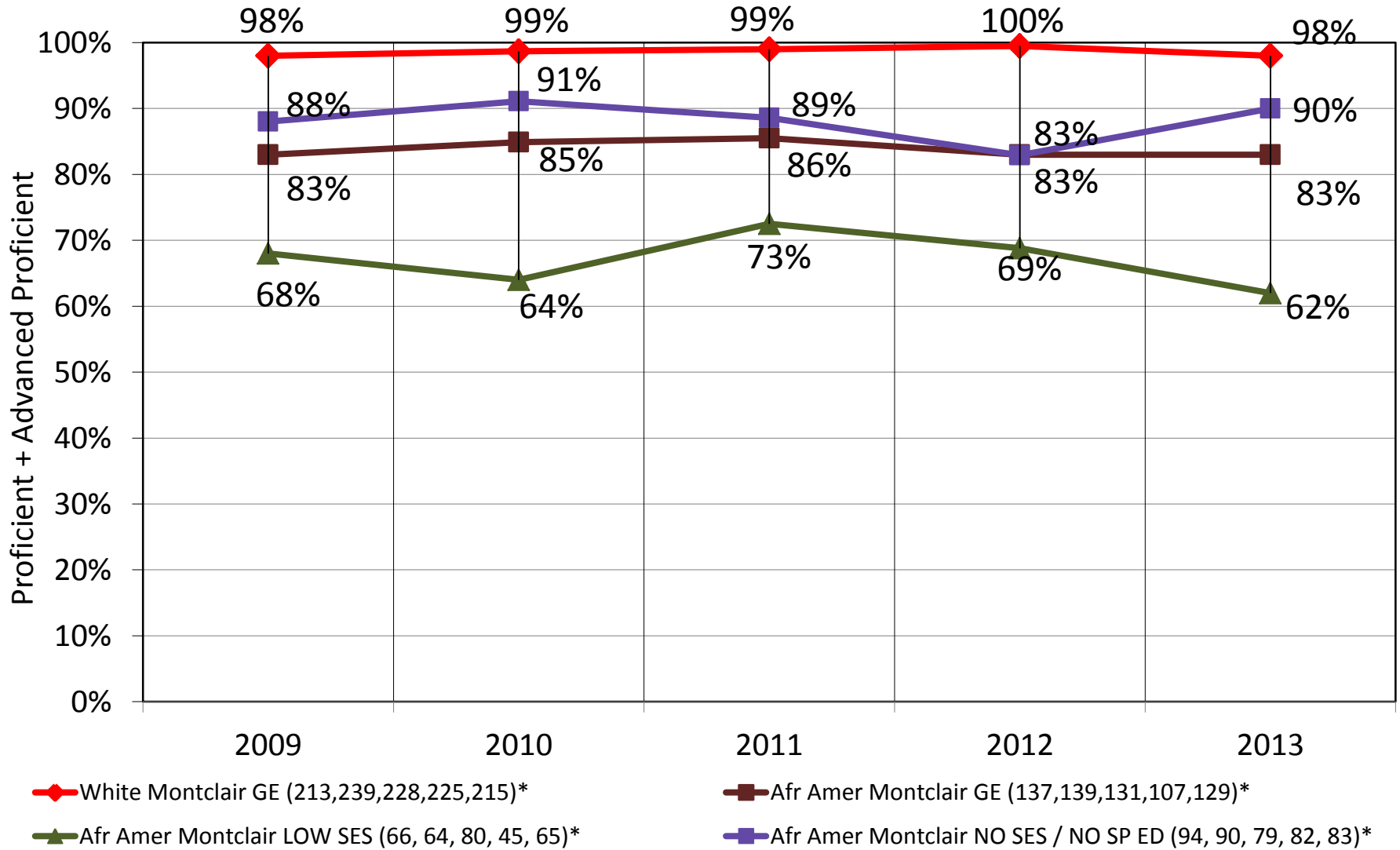
NJ ASK 5 LAL Prof/AdvProf



* No. of Valid Scores by year

W / AA: 2009-12

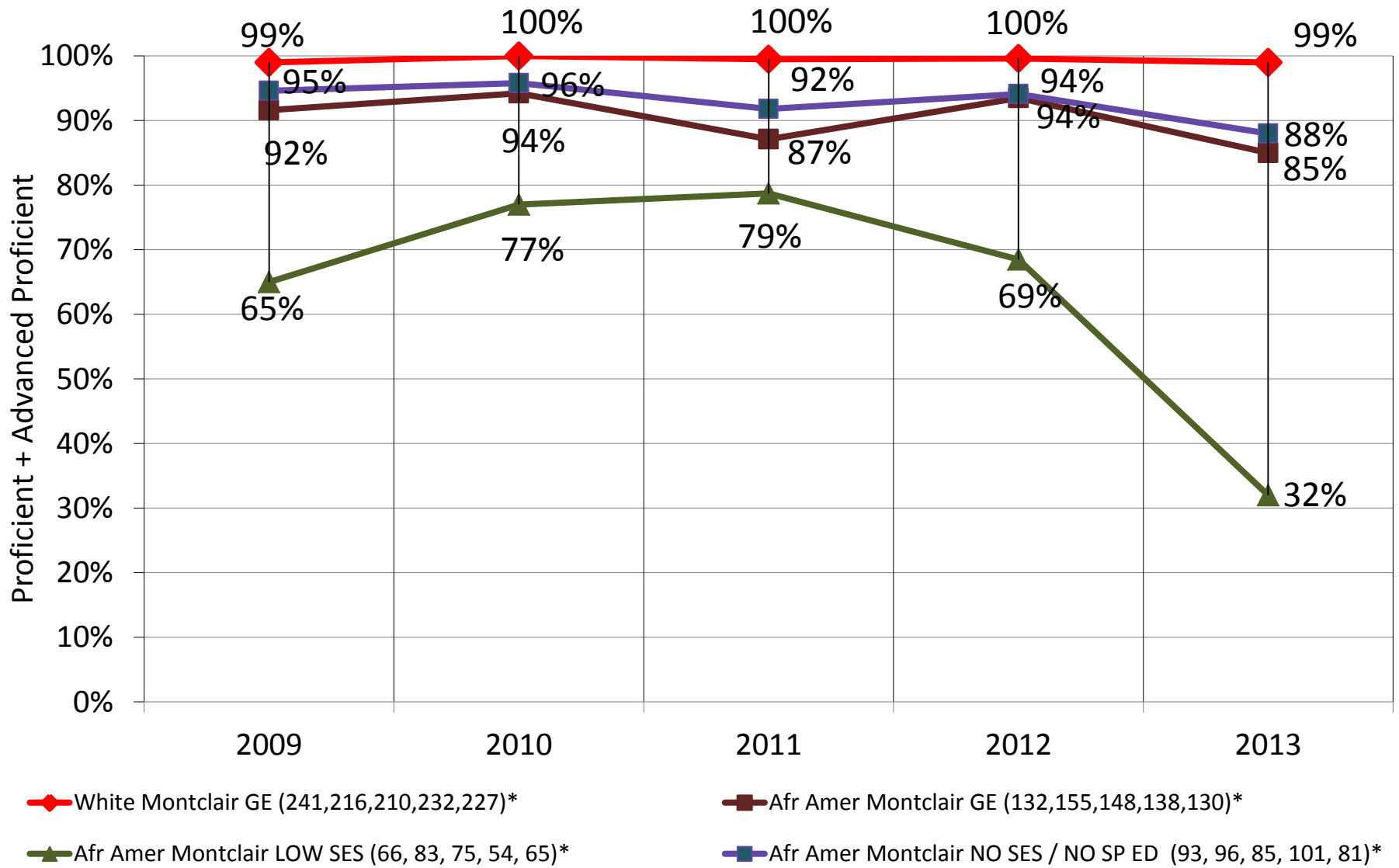
NJ ASK 5 MATH Prof/AdvProf



* No. of Valid Scores by year

W / AA: 2009-12

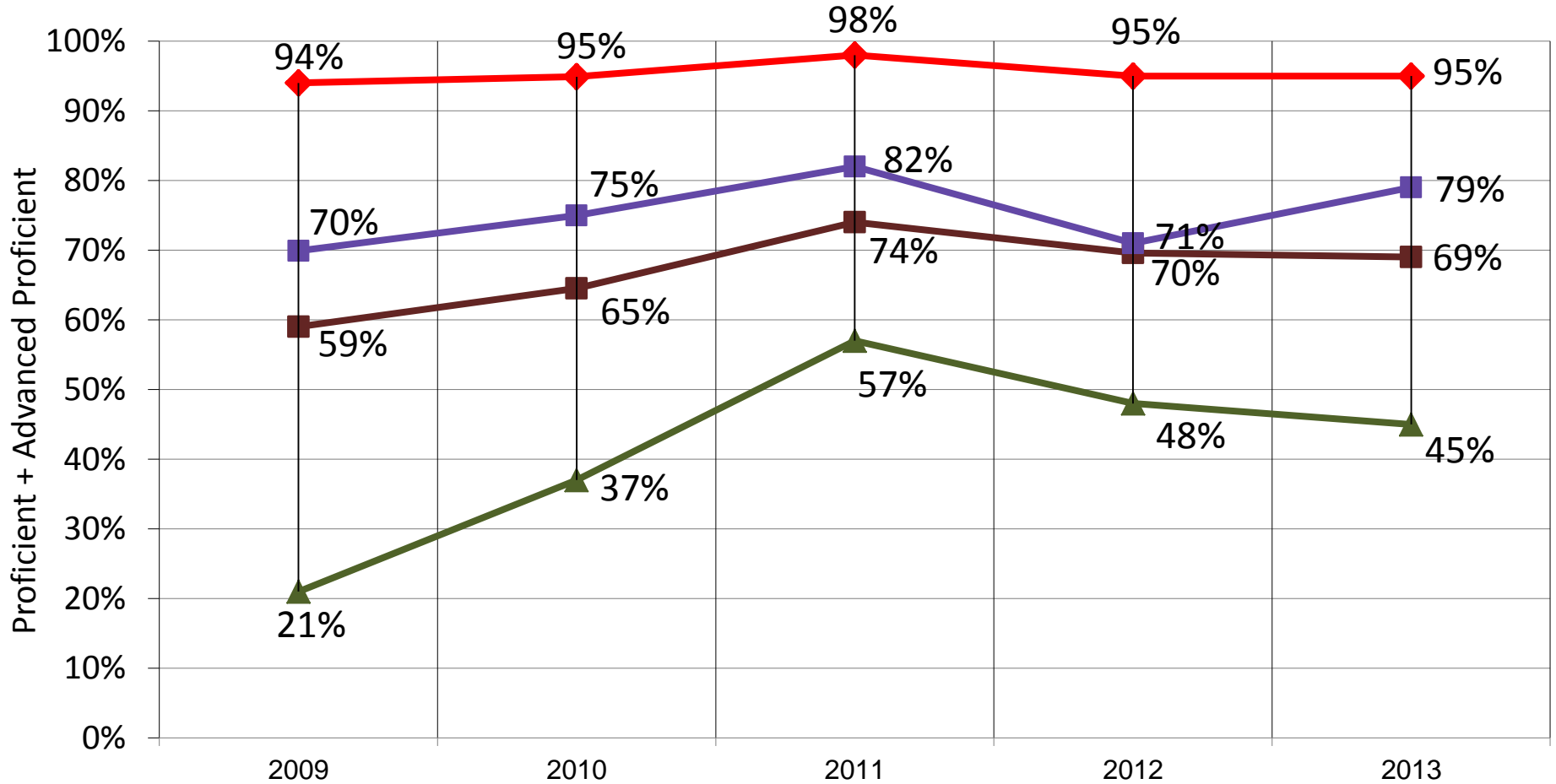
NJ ASK 8 LAL Prof/AdvProf



* No. of Valid Scores by year

W / AA: 2009-12

NJ ASK 8 MATH Prof/AdvProf



White Montclair GE (241,216,210,232,227)*

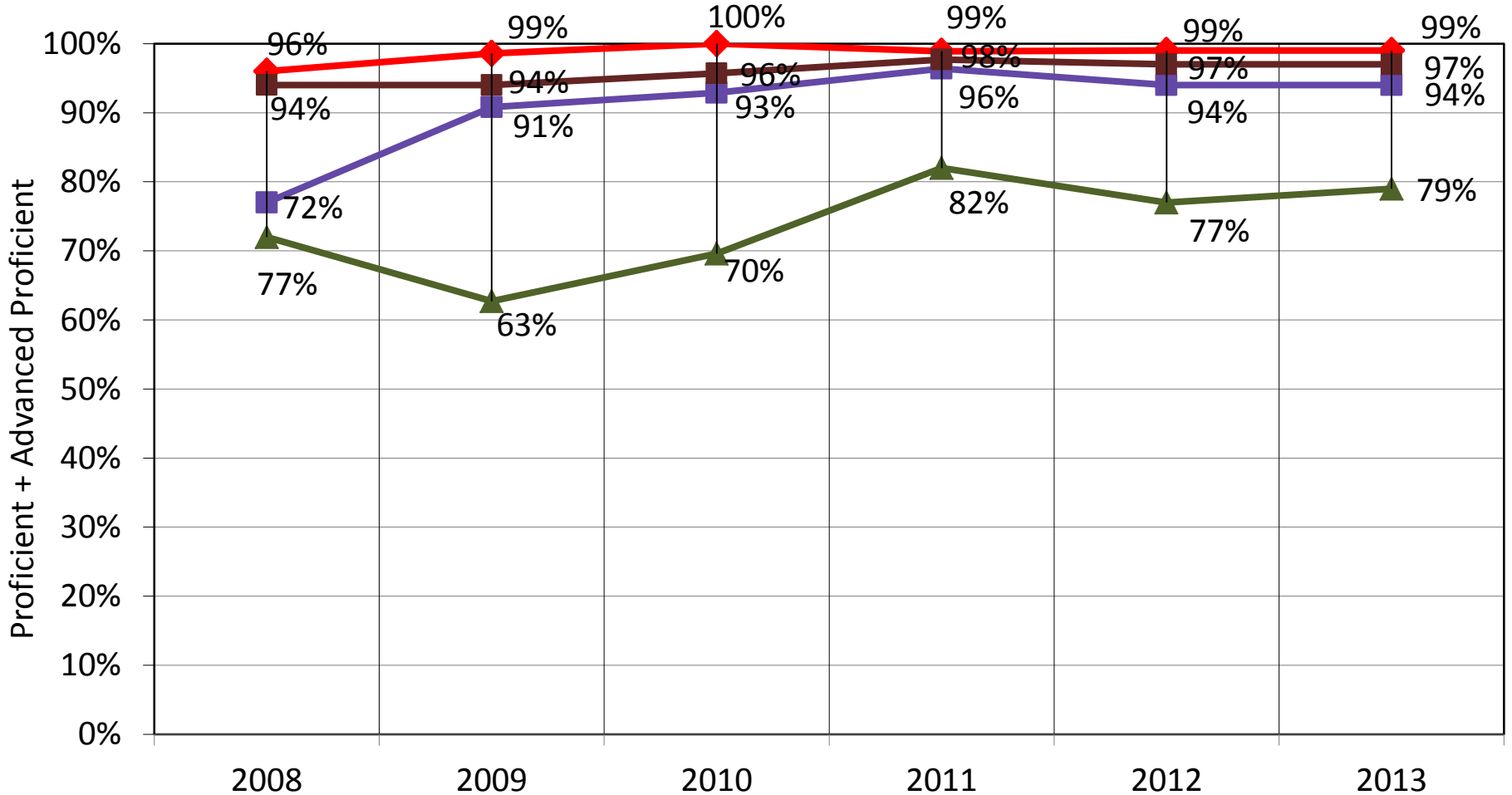
Afr Amer Montclair GE (137,155,148,138,130)*

Afr Amer Montclair LOW SES (66, 83, 75, 54, 67)*

Afr Amer Montclair NO SES / NO SP ED (93, 96, 85, 101, 81)*

W / AA: 2009-13

NJ HSPA 11 LAL Prof/AdvProf



White Montclair GE (216, 215, 197, 233,207)*

Afr Amer Montclair GE (141, 127, 140, 126,157)*

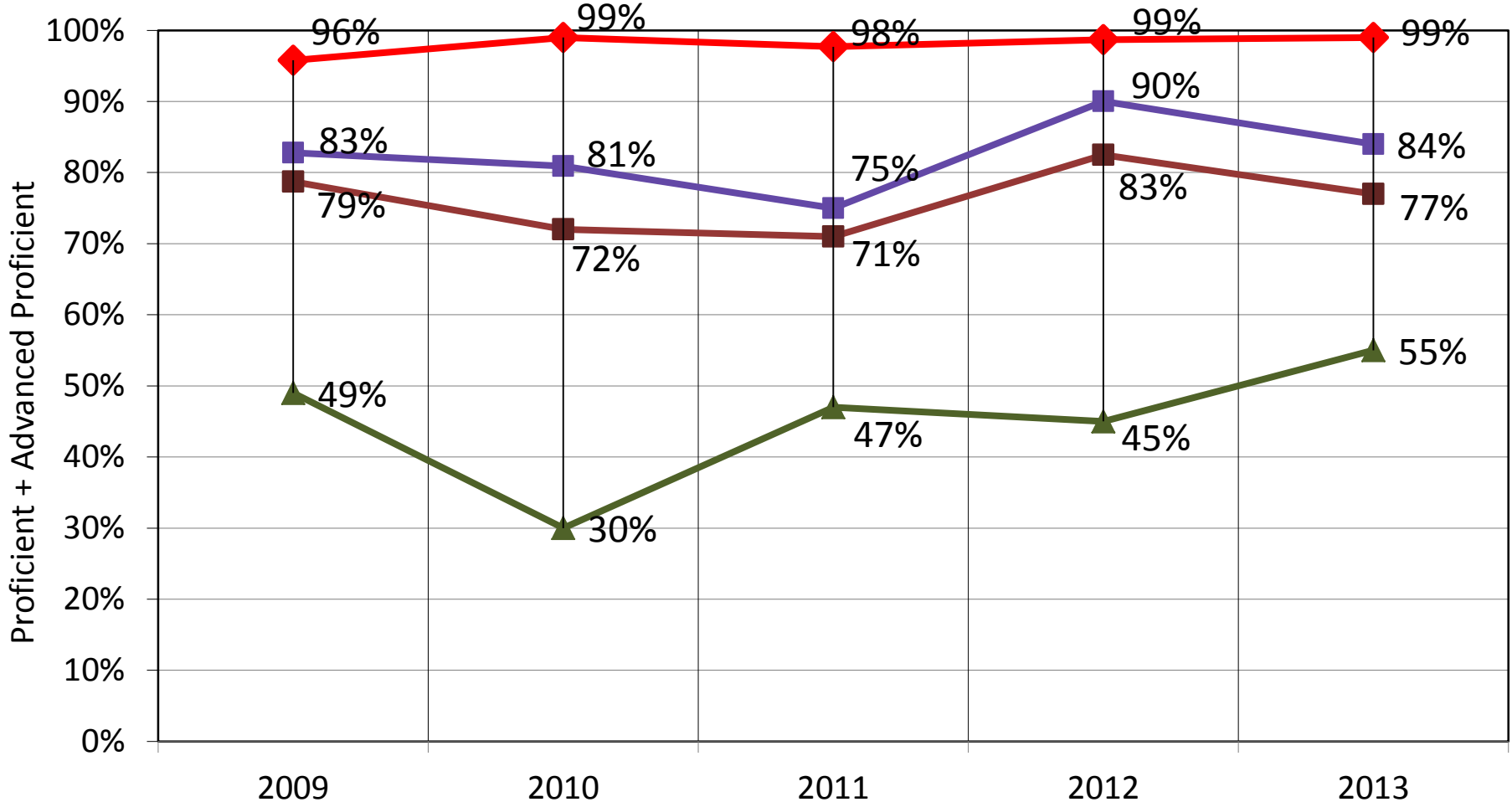
Afr Amer Montclair LOW SES (51, 56, 85, 55, 86)*

Afr Amer Montclair NO SES / NO SP ED (105, 94, 88, 92, 91)*

* No. of Valid Scores by year

W / AA: 2009-13

NJ HSPA 11 MATH Prof/AdvProf



◆ White Montclair GE (216, 215, 197, 233, 207)*
▲ Afr Amer Montclair LOW SES (51, 56, 85, 55, 86)*

■ Afr Amer Montclair GE (141, 127, 140, 126, 157)*
■ Afr Amer Montclair NO SES / NO SP ED (105, 94, 88, 92, 91)*

* No. of Valid Scores by year

SAT and Advanced Placement (AP)
Results
2011-12 & 2012-13

SAT and Advanced Placement (AP) Results 2011-2012 and 2012-2013

College and Career Readiness Indicators	MHS 2011-12	MHS 2012-13
Percent of students participating in SAT	91%	91%
Percent of students scoring above 1550 on SAT	55%	59%
Percent of Students taking one or more AP course	57.8%	56.6%
Percent of students taking one more AP test	27.4%	28.7%
Percent of students scoring a 3 or better on AP tests	84.3%	84.6%

Academic Achievement
Montclair V. State (in percentiles)
2011-12 & 2012-13

2013 Academic Achievement Montclair v. State (in percentiles)

SCHOOL	11-12	12-13	CHANGE(+/-)
MHS	43	40	-3
GLENFIELD	67	68	1
MT HEBRON	52	45	-7
RENAISSANCE	73	76	3
BRADFORD	78	84	6
BULLOCK	38	42	4
EDGEMONT	56	47	-9
HILLSIDE	49	57	8
NORTHEAST	48	52	4
WATCHUNG	97	94	-3
District Average	60 th Percentile	61 st Percentile	+4

Very High Performance is defined as being equal to or above the 80th percentile.
High Performance is defined as being between the 60th and 79.9th percentiles.
Average Performance is defined as being between the 40th and 59.9th percentiles.
Average Performance is defined as being between the 40th and 59.9th percentiles.
Lagging Performance is defined as being between the 20th and 39.9th percentiles.
Significantly Lagging Performance is defined as being equal to or below the 19.9th percentile.

2011-12 & 2012-13 Growth
Montclair v. State (in percentiles)

2011-12 & 2012-13 Growth Montclair v. State (in percentiles)

SCHOOL	11-12	12-13	CHANGE(+/-)
GLENFIELD	46	39	-7
MT HEBRON	31	31	0
RENAISSANCE	32	35	3
BRADFORD	67	66	-1
BULLOCK	35	74	39
EDGEMONT	55	42	-13
HILLSIDE	53	68	15
NORTHEAST	51	76	25
WATCHUNG	58	65	7
District Average	48 th percentile	55th percentile (Avg)	

Very High Performance is defined as being equal to or above the 80th percentile.

High Performance is defined as being between the 60th and 79.9th percentiles.

Average Performance is defined as being between the 40th and 59.9th percentiles.

Average Performance is defined as being between the 40th and 59.9th percentiles.

Lagging Performance is defined as being between the 20th and 39.9th percentiles.

Significantly Lagging Performance is defined as being equal to or below the 19.9th percentile.

Growth & Proficiency Levels

Elementary Growth by Proficiency Level

14% of Montclair elementary students are **advanced proficient** in **ELA**

100% grew at a **typical/high** level compared to advanced proficient students in NJ

60% of Montclair elementary students are **proficient** in **ELA**

73% grew at a **typical/high** level compared to proficient students in NJ

26% of Montclair elementary students are **partially proficient** in **ELA**

42% grew at a **typical/high** level compared to partially proficient students in NJ

54% of Montclair elementary students are **advanced proficient** in **MATH**

81% grew at a **typical/high** level compared to advanced proficient students in NJ

34% of Montclair elementary students are **proficient** in **MATH**

63% grew at a **typical/high** level compared to proficient students in NJ

12% of Montclair elementary students are **partially proficient** in **MATH**

43% grew at a **typical/high** level compared to partially proficient students in NJ

Middle School Growth by Proficiency Level

16% of Montclair middle school students are **advanced proficient** in **ELA**
88% grew at a **typical/high** level compared to advanced proficient students in NJ

65% of Montclair middle school students are **proficient** in **ELA**
64% grew at a **typical/high** level compared to proficient students in NJ

20% of Montclair middle school students are **partially proficient** in **ELA**
38% grew at a **typical/high** level compared to partially proficient students in NJ

38% of Montclair middle school students are **advanced proficient** in **MATH**
74% grew at a **typical/high** level compared to advanced proficient students in NJ

40% of Montclair middle school students are **proficient** in **MATH**
56% grew at a **typical/high** level compared to proficient students in NJ

23% of Montclair middle school students are **partially proficient** in **MATH**
37% grew at a **typical/high** level compared to partially proficient students in NJ

APPENDIX

2013 Elem Growth: Adv Proficient

ELA

SCHOOL	LOW %	TYPICAL %	HIGH %	TOTAL %
BRADFORD	0	4	14	18
BULLOCK	0	1	9	10
EDGEMONT	0	1	5	6
HILLSIDE	0	2	13	15
NORTHEAST	0	0	11	11
WATCHUNG	1	2	21	24
AVERAGE:	0%	2%	12%	14%

On average, 14% of Montclair elementary students are advanced proficient in ELA. Of these, 100% grew at a typical or high level. 0% grew at low level.

MATH

BRADFORD	19	15	27	61
BULLOCK	9	10	24	43
EDGEMONT	3	13	26	42
HILLSIDE	8	12	33	53
NORTHEAST	9	13	35	57
WATCHUNG	14	19	34	67
AVERAGE:	10%	14%	30%	54%

On average, 54% of Montclair elementary students are advanced proficient in MATH. Of these, 81% grew at a typical or high level. 19% grew at a low level.

2013 Elem Growth: Proficient

ELA

SCHOOL	LOW %	TYPICAL %	HIGH %	TOTAL %
BRADFORD	16	20	27	63
BULLOCK	12	16	28	56
EDGEMONT	22	19	22	63
HILLSIDE	17	21	20	58
NORTHEAST	14	17	26	57
WATCHUNG	17	25	21	63
AVERAGE:	16%	20%	24%	60%

On average, 60% of Montclair elementary students are proficient in ELA. Of these, 73% grew at a typical or high level. 27% grew at a low level.

MATH

BRADFORD	14	14	5	33
BULLOCK	8	11	18	37
EDGEMONT	16	16	11	43
HILLSIDE	11	14	11	36
NORTHEAST	12	8	9	29
WATCHUNG	14	7	5	26
AVERAGE:	13%	12%	10%	34%

On average, 34% of Montclair elementary students are proficient in MATH. Of these, 65% grew at a typical or high level. 38% grew at a low level.

2013 Elem Growth: Partially Proficient

ELA

SCHOOL	LOW %	TYPICAL %	HIGH %	TOTAL %
BRADFORD	12	4	2	18
BULLOCK	21	9	3	33
EDGEMONT	21	11	5	31
HILLSIDE	14	10	3	27
NORTHEAST	18	7	8	33
WATCHUNG	10	2	1	13
AVERAGE:	15%	7%	4%	26%

On average, 26% of Montclair elementary students are partially proficient in ELA. Of these, 42% grew at a typical or high level. 58% grew at a low level.

MATH

BRADFORD	4	1	0	5
BULLOCK	12	4	3	19
EDGEMONT	12	3	1	16
HILLSIDE	6	2	3	11
NORTHEAST	8	4	1	13
WATCHUNG	5	1	1	7
AVERAGE:	8%	3%	2%	12%

On average, 12% of Montclair elementary students are partially proficient in MATH. Of these, 42% grew at a typical or high level. 67% grew at a low level.

2013 Middle School Growth: Advanced Proficient

ELA

SCHOOL	LOW %	TYPICAL %	HIGH %	TOTAL %
GLENFIELD	1	5	12	18
MT HEBRON	1	2	10	13
RENAISSANCE	3	4	9	16
AVERAGE:	2%	4%	10%	16%

On average, 16% of Montclair middle school students are advanced proficient in ELA. Of these, 88% grew at a typical or high level. 13% grew at low level.

MATH

GLENFIELD	9	14	18	41
MT HEBRON	8	6	16	30
RENAISSANCE	12	11	19	42
AVERAGE:	10%	10%	18%	38%

On average, 38% of Montclair middle school students are advanced proficient in MATH. Of these, 74% grew at a typical or high level. 26% grew at a low level.

2013 Middle School Growth: Proficient

ELA

SCHOOL	LOW %	TYPICAL %	HIGH %	TOTAL %
GLENFIELD	25	24	19	68
MT HEBRON	20	19	20	59
RENAISSANCE	25	23	19	67
AVERAGE:	23%	22%	19%	65%

On average, 65% of Montclair middle school students are proficient in ELA. Of these, 63% grew at a typical or high level. 35% grew at a low level.

MATH

GLENFIELD	20	13	7	40
MT HEBRON	16	16	8	40
RENAISSANCE	16	12	11	39
AVERAGE:	17%	14%	9%	40%

On average, 40% of Montclair middle school students are proficient in MATH. Of these, 58% grew at a typical or high level. 43% grew at a low level.

2013 Middle School Growth: Partially Proficient

ELA

SCHOOL	LOW %	TYPICAL %	HIGH %	TOTAL %
GLENFIELD	10	3	1	14
MT HEBRON	18	7	3	28
RENAISSANCE	9	7	1	17
AVERAGE:	12%	6%	2%	20%

On average, 20% of Montclair middle school students are partially proficient in ELA. Of these, 40% grew at a typical or high level. 60% grew at low level.

MATH

GLENFIELD	11	5	2	18
MT HEBRON	20	8	3	31
RENAISSANCE	12	4	3	19
AVERAGE:	14%	6%	3%	23%

On average, 23% of Montclair middle school students are partially proficient in MATH. Of these, 39% grew at a typical or high level. 61% grew at a low level.