

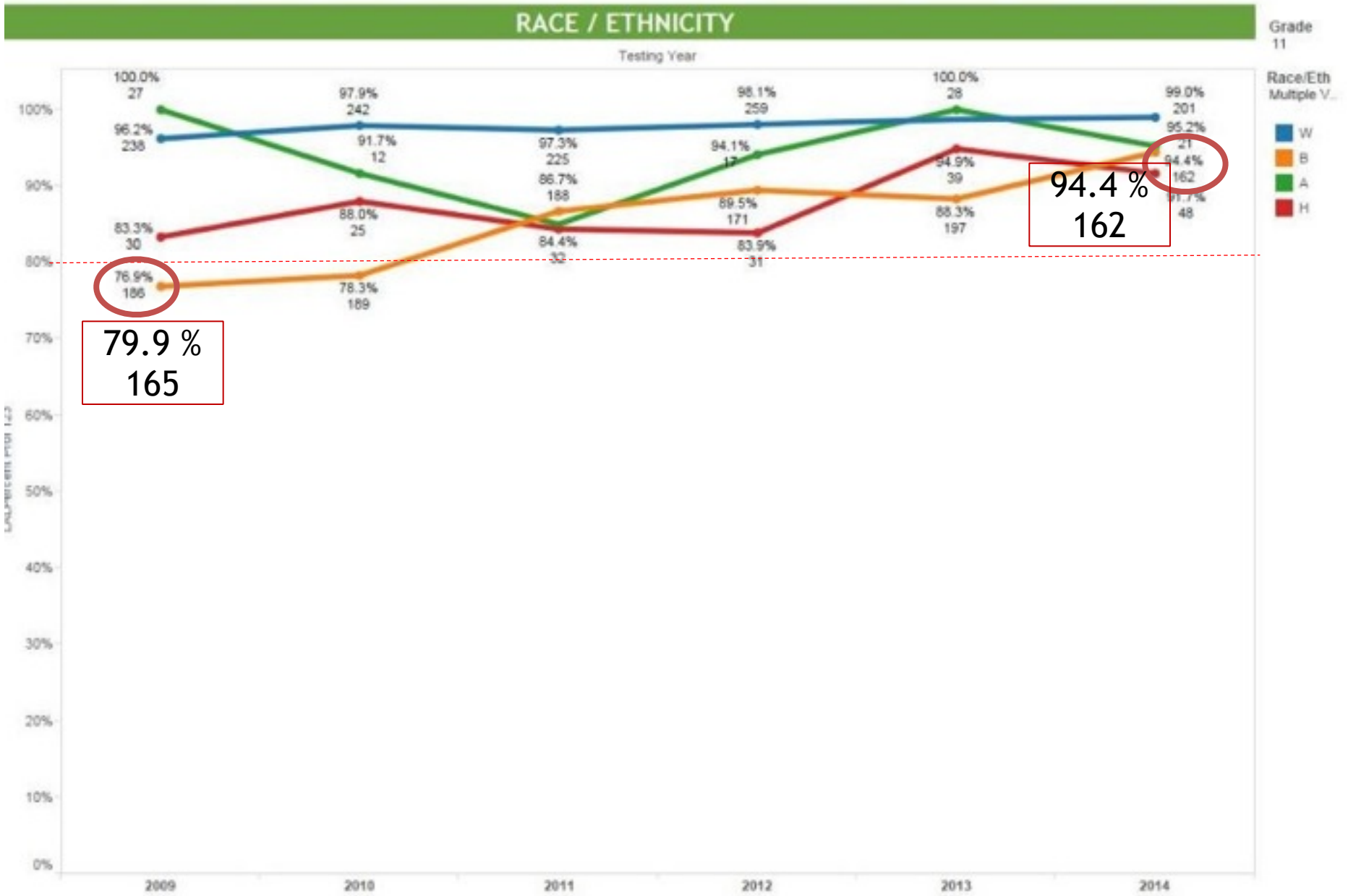
Montclair Public Schools

AGAP: Supplemental Docs

June 2015

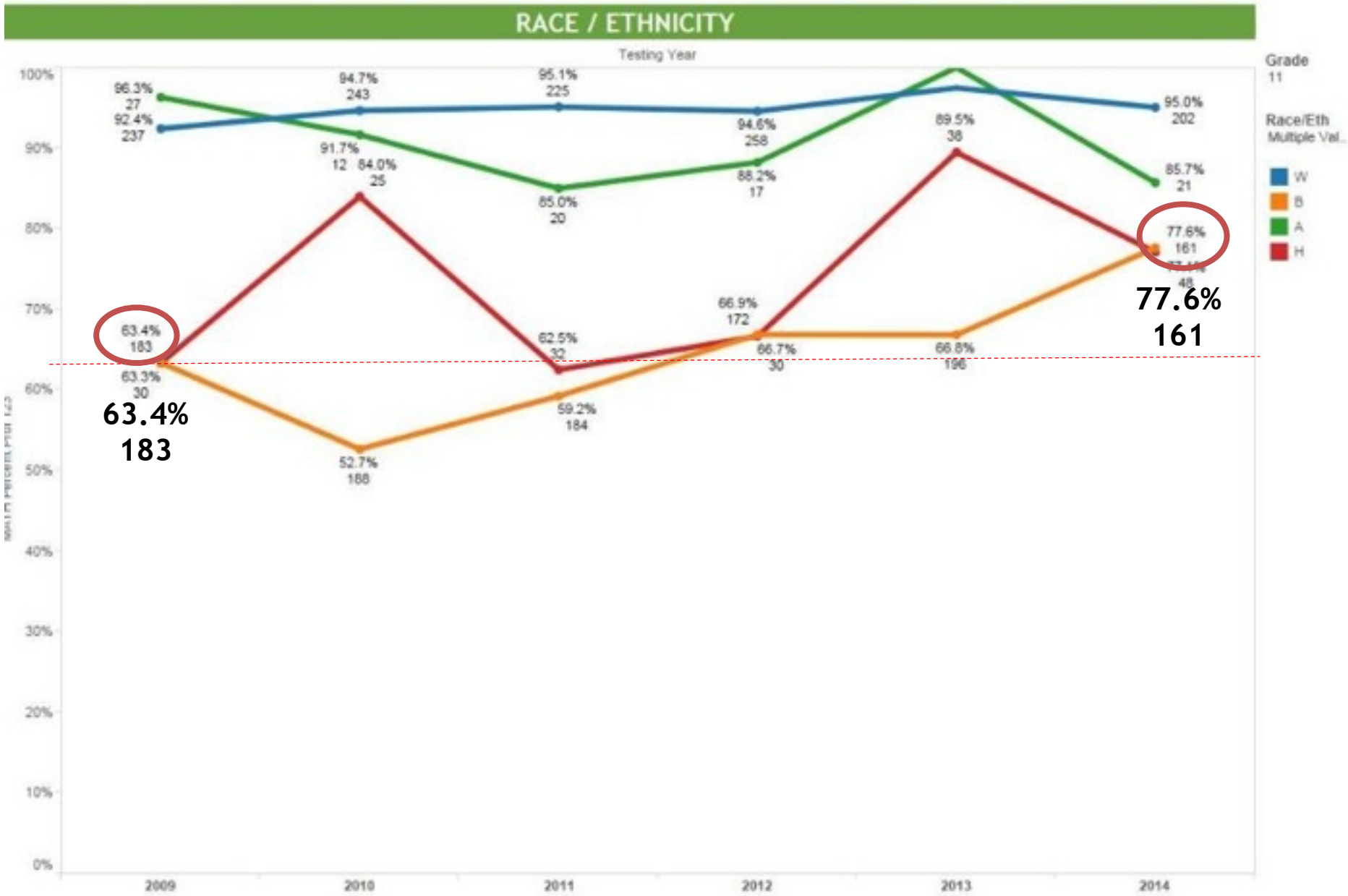
Montclair HSPA ELA Race / Eth Percent Proficient

Gr11



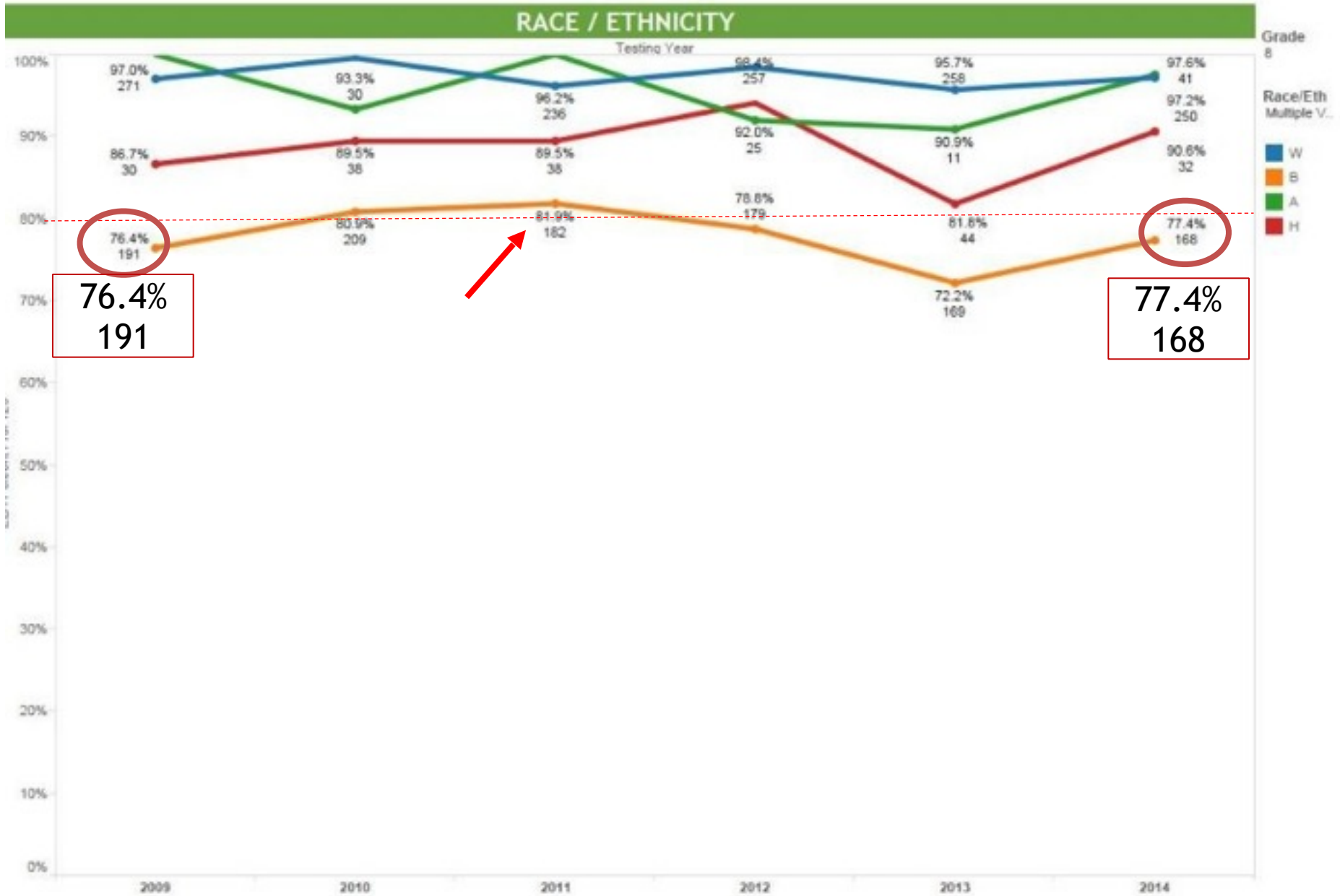
Montclair HSPA MATH Race / Eth Percent Proficient

Gr 11



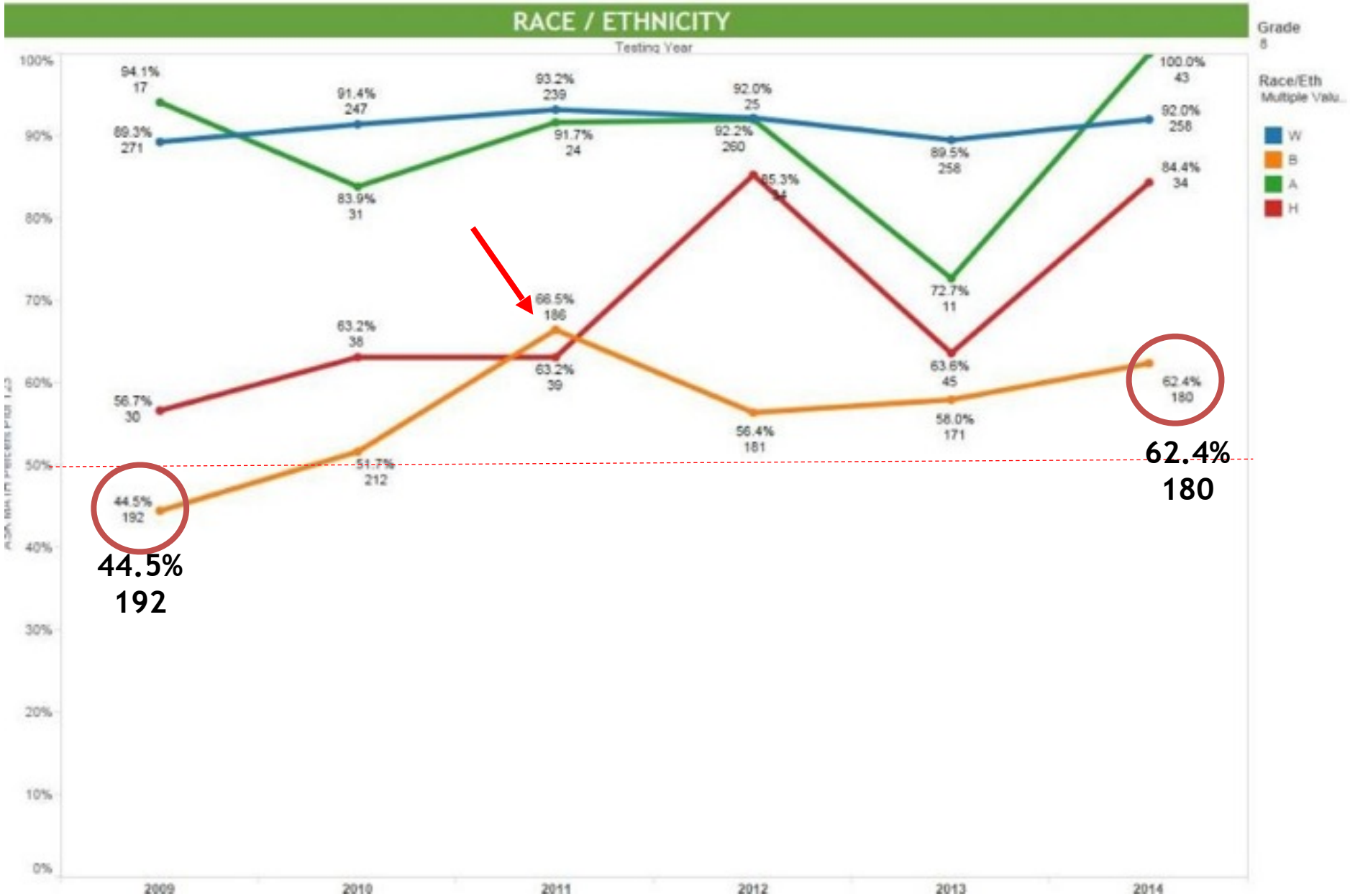
Montclair NJ ASK ELA Race / Eth Percent Proficient

Gr8



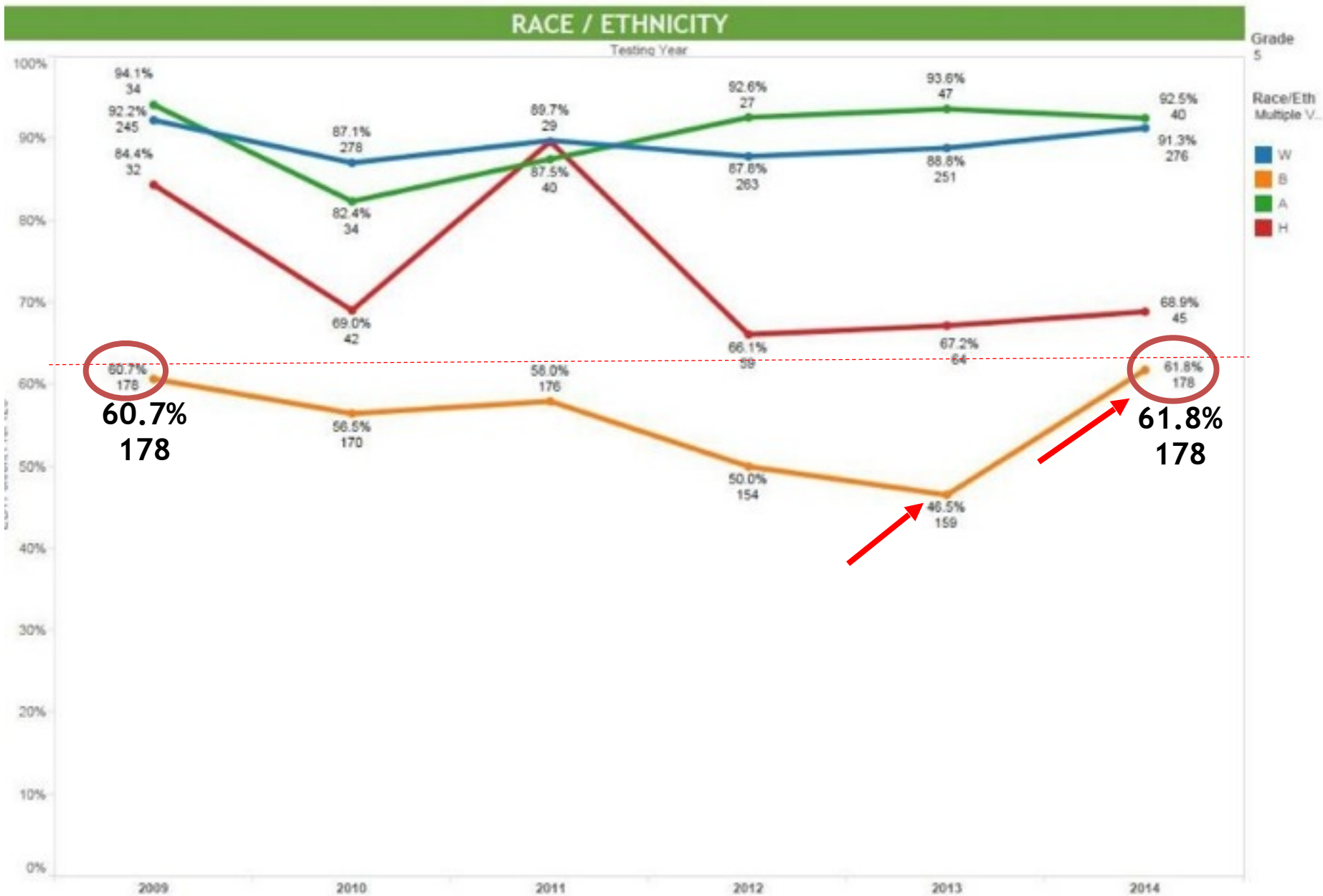
Montclair NJ ASK MATH Race / Eth Percent Proficient

Gr8



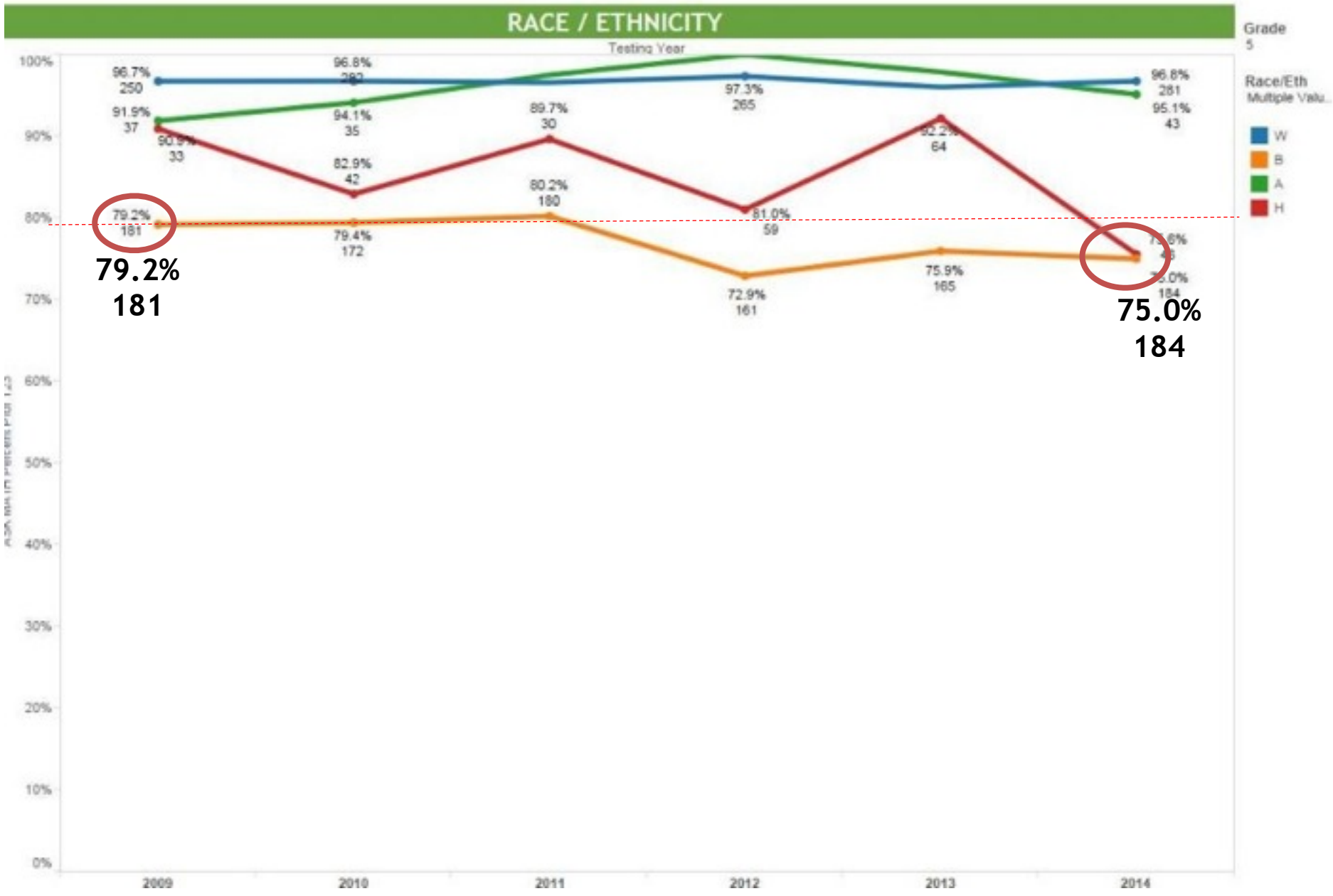
Montclair NJ ASK ELA Race / Eth Percent Proficient

Gr5



Montclair NJ ASK MATH Race / Eth Percent Proficient

Gr5

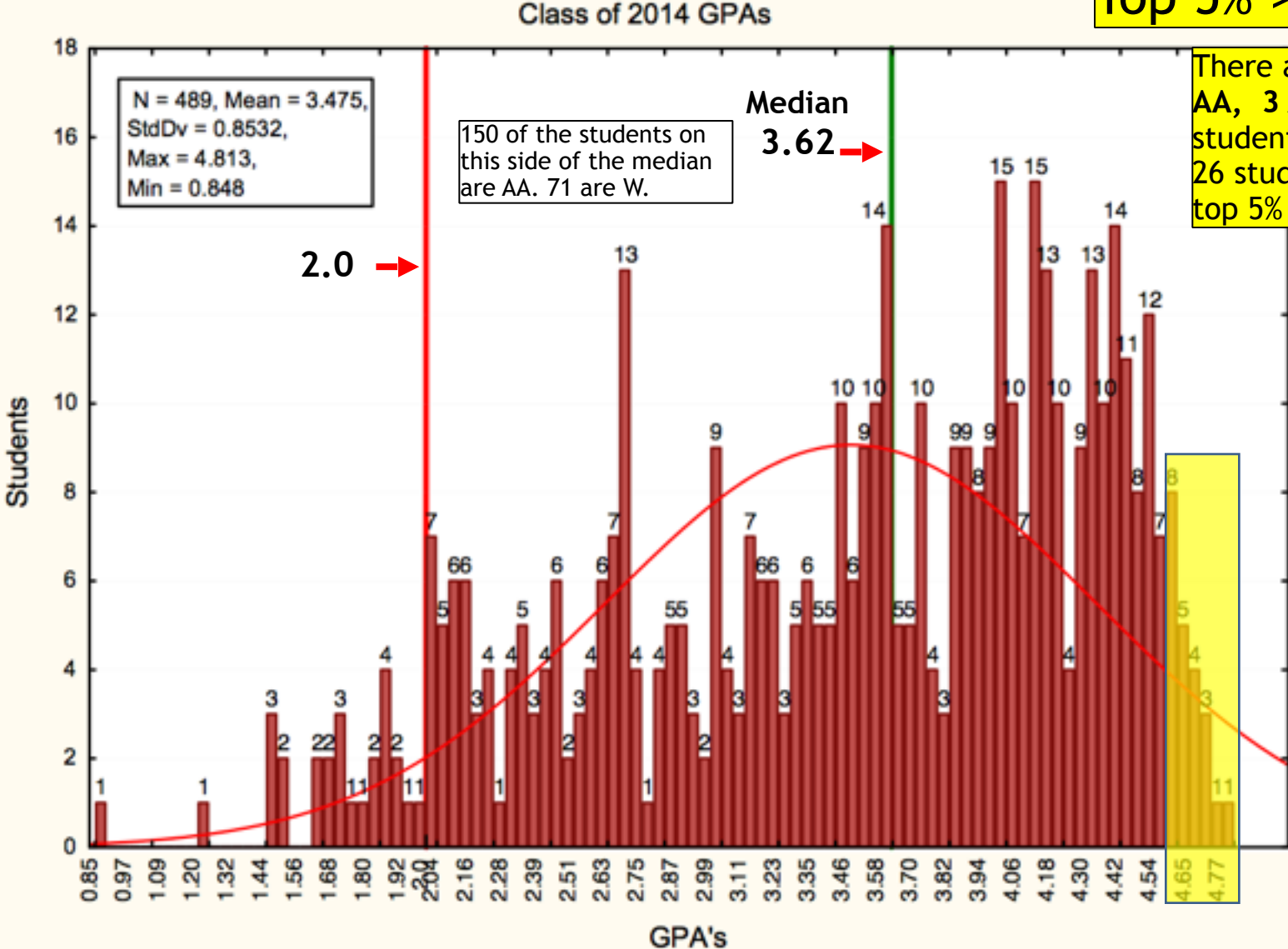


79.2%
181

75.0%
184

Class of 2014 GPA's

Top 5% ≥ 4.5653

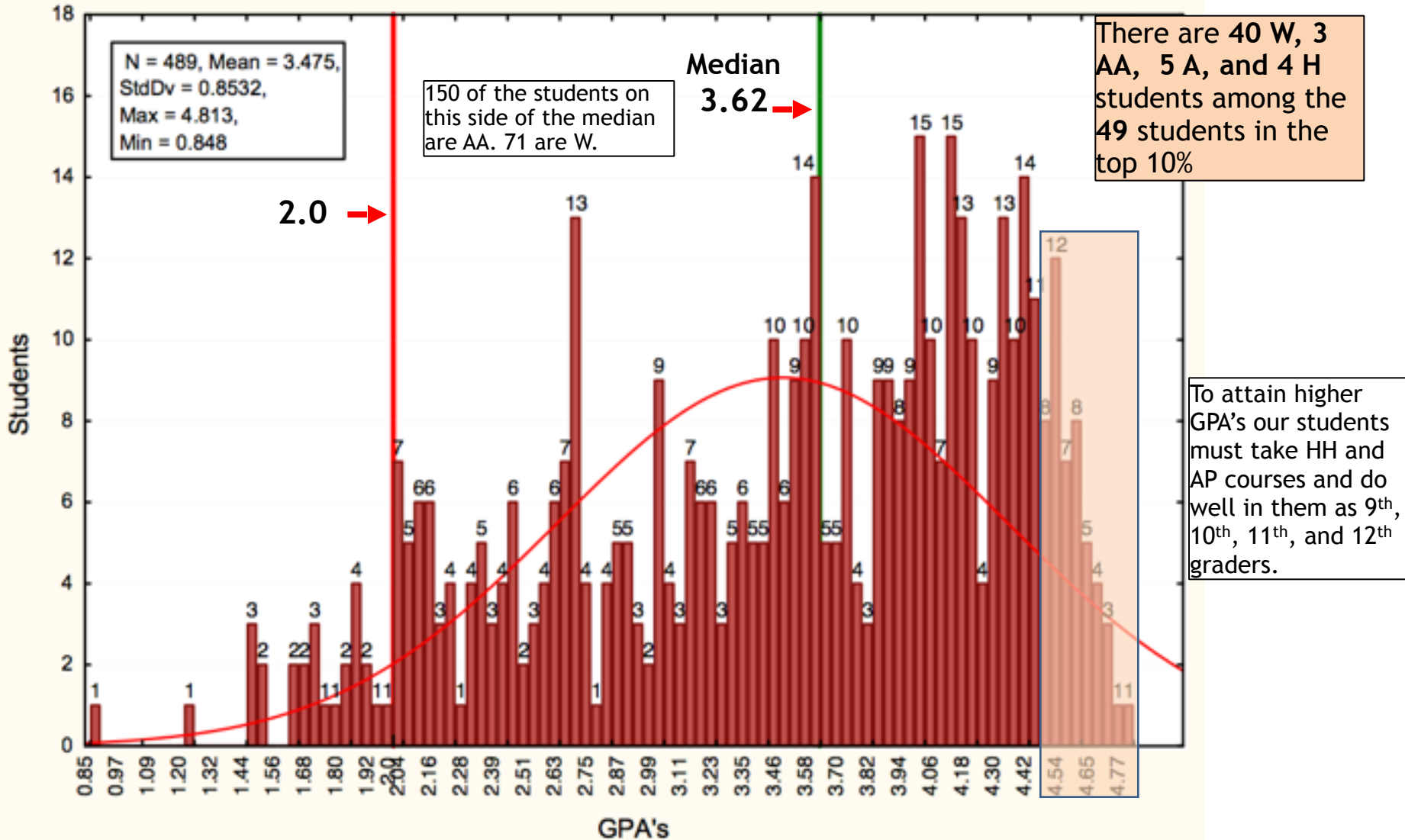


There are 20 W, 1 AA, 3 A, and 0 H students among the 26 students in the top 5%

To attain higher GPA's our students must take HH and AP courses and do well in them as 9th, 10th, 11th, and 12th graders.

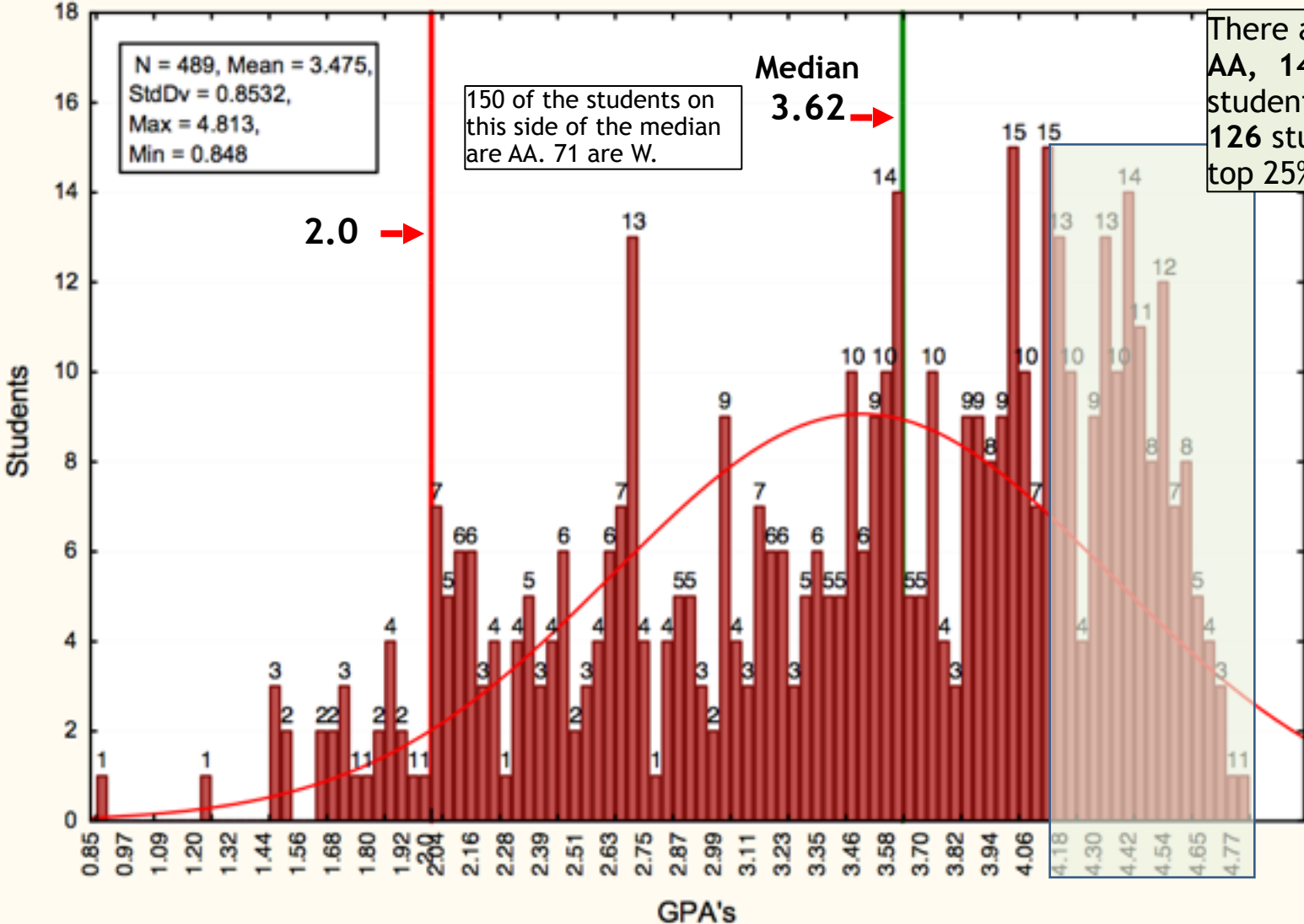
Class of 2014 GPA's

Top 10% ≥ 4.4577



Class of 2014 GPA's

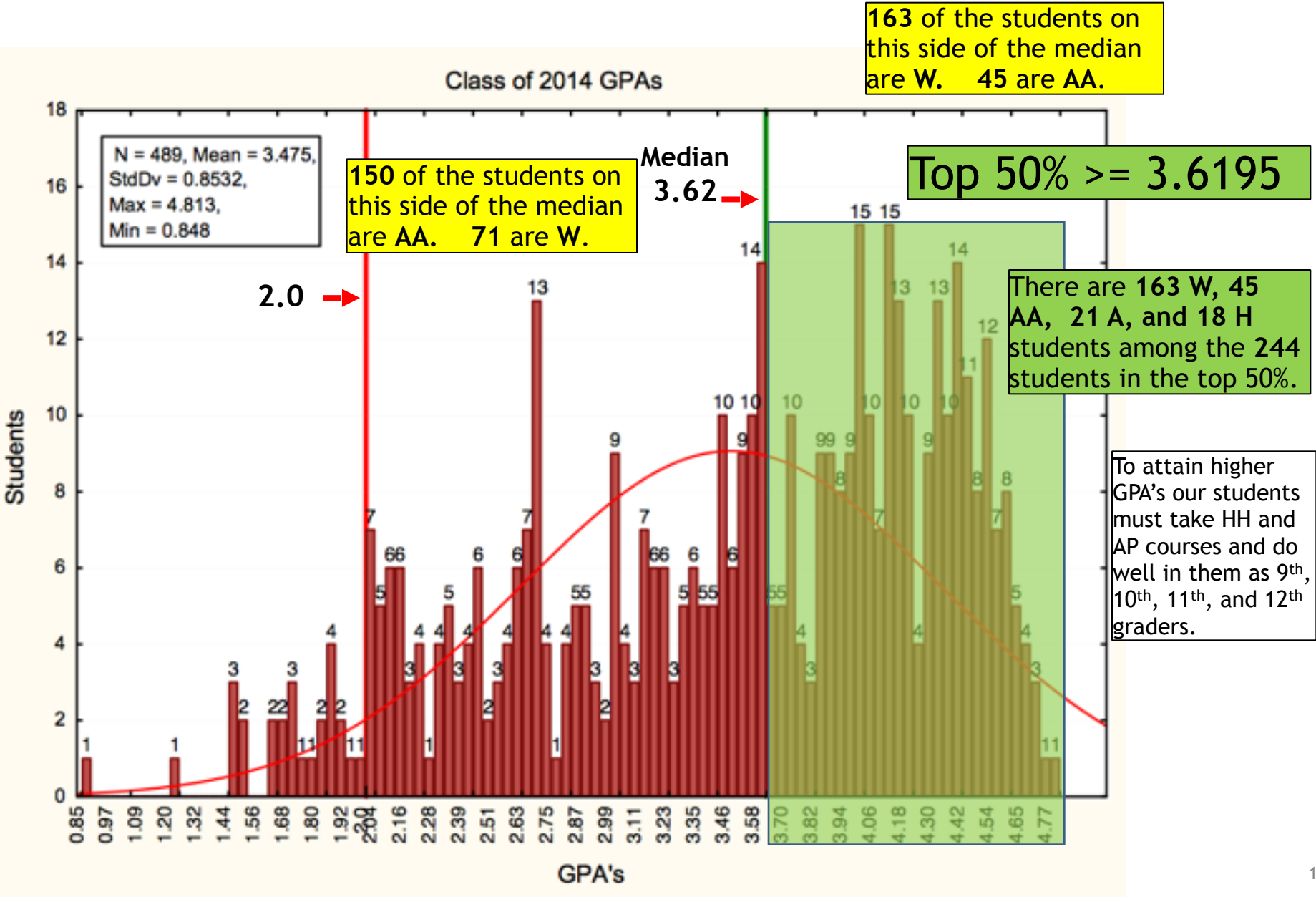
Top 25% ≥ 4.1713



There are 90 W, 12 AA, 14 A, and 10 H students among the 126 students in the top 25%

To attain higher GPA's our students must take HH and AP courses and do well in them as 9th, 10th, 11th, and 12th graders.

Class of 2014 GPA's



MHS AP CLASS DISTRIBUTIONS*

AP COURSE 2012-2013	W	AA	H	A	TOTAL	AP COURSE 2013-2014	W	AA	H	A	TOTAL
AP ART HISTORY	9	0	2	2	13	AP ART HISTORY	18	3	1	3	25
AP STUDIO ART	10	2	1	1	14	AP STUDIO ART	13	1	2	2	18
AP ENG 12	90	14	2	4	110	AP ENG 12	75	10	7	8	100
AP ENG LANG & COMP	23	4	1	6	34	AP ENG LANG & COMP	23	3	0	3	29
AP FRENCH LANGUAGE	27	1	0	5	33	AP FRENCH LANGUAGE	9	3	0	0	12
AP GERMAN	8	2	0	1	11	AP GERMAN	0	0	0	0	0
AP LAT V VERGIL	6	1	0	1	8	AP LAT V VERGIL	1	0	0	0	1
AP SPANISH V	48	12	11	4	75	AP SPANISH V	47	13	11	4	77
AP SPANISH LIT	9	0	3	0	12	AP SPANISH LIT	13	4	6	1	24
AP CALC AB	40	9	3	4	56	AP CALC AB	36	6	0	4	46
AP CALC BC	33	2	2	7	44	AP CALC BC	38	3	2	4	47
AP STATS	18	4	1	0	23	AP STATS	40	3	4	5	52
AP BIOLOGY	64	6	2	8	80	AP BIOLOGY	40	5	4	9	58
AP CHEMISTRY	8	1	0	1	10	AP CHEMISTRY	14	2	1	2	19
AP PHYSICS B	15	1	2	3	21	AP PHYSICS B	26	6	2	2	36
AP PHYSICS C MECH	21	2	1	6	30	AP PHYSICS C MECH	33	2	0	1	36
AP PHYSICS C ELEC/MAG	7	0	1	3	11	AP PHYSICS C ELEC/MAG	13	2	1	5	21
AP ENVIRONMENTAL SCI	37	0	1	4	42	AP ENVIRONMENTAL SCI	31	6	3	5	45
TOTAL	473	61	33	60	627	TOTAL	470	72	44	58	646

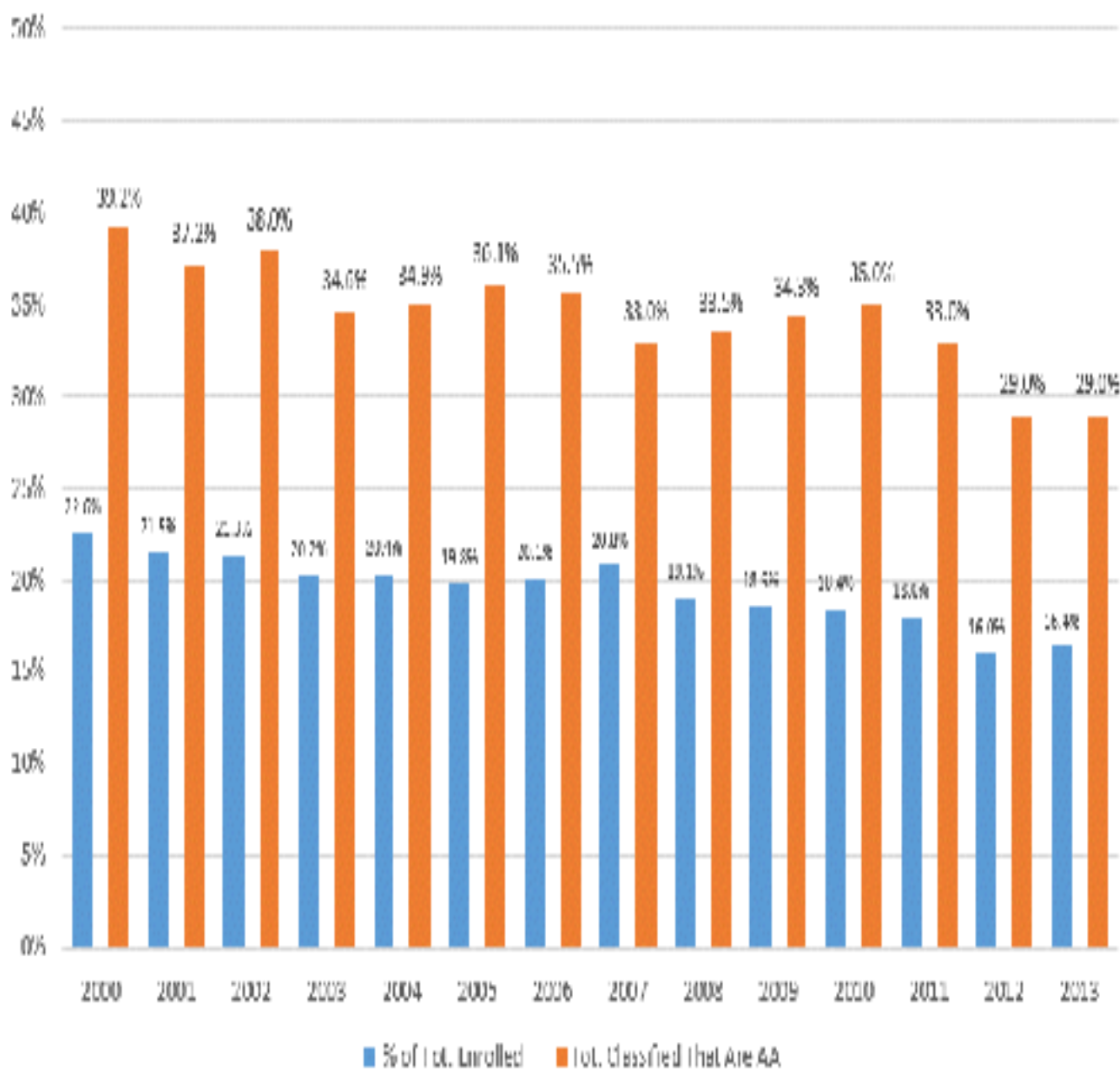
* 11th and 12th grades only; Does not include 10th grade AP US History

MHS AP CLASS DISTRIBUTIONS*

AP COURSE 2009-2010	W	AA	H	A	TOTAL	AP COURSE 2010-2011	W	AA	H	A	TOTAL
AP ART HISTORY	19	5	0	1	25	AP ART HISTORY (10	1	0	3	14
AP STUDIO ART	9	5	1	0	15	AP STUDIO ART	10	2		1	13
AP ENG 12	54	9	3	6	72	AP ENG 12 (153)	57	10	5	3	75
AP ENG LANG & COMP	32	4	1	0	37	AP ENG LANG & COMP	38	8	2	6	54
AP FRENCH LANGUAGE	24	4	1	2	31	AP FRENCH LANGUAGE	27	6	0	0	33
AP GERMAN	3	2	0	1	6	AP GERMAN	6	0	0	0	6
AP LAT V VERGIL	3	0	0	1	4	AP LAT V VERGIL	3	2	0	0	5
AP SPANISH V	35	9	14	1	59	AP SPANISH V	45	11	7	2	65
AP SPANISH LIT	12	4	2	0	18	AP SPANISH LIT	11	1	10	1	23
AP CALC AB	17	3	2	3	25	AP CALC AB	20	1	2	1	24
AP CALC BC	18	0	0	1	19	AP CALC BC	26	3	0	6	35
AP STATS	15	4	0	3	22	AP STATS	17	4	3	0	24
AP BIOLOGY	48	5	2	2	57	AP BIOLOGY	32	7	0	3	42
AP CHEMISTRY	7	2	0	1	10	AP CHEMISTRY	11	0	0	0	11
AP PHYSICS B	33	4	5	4	46	AP PHYSICS B	23	2	1	0	26
AP PHYSICS C MECH	0	0	0	0	0	AP PHYSICS C MECH	0	0	0	0	0
AP PHYSICS C ELEC/MAG	5	0	0	1	6	AP PHYSICS C ELEC/MAG	11	1	0	2	14
AP ENVIRONMENTAL SCI	46	5	0	6	57	AP ENVIRONMENTAL SCI	55	6	5	2	68
TOTAL	380	65	31	33	509	TOTAL	402	65	35	30	532

* 11th and 12th grades only; Does not include 10th grade AP US History

Percentages of AA Males in Special Education



Percentages of White Males in Special Education

